

YOUR

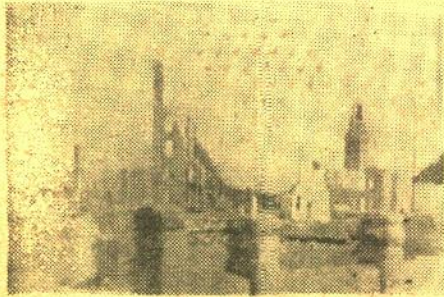
# Blackhawk Films®

BARGAIN BULLETIN NO. 67

Telephone: 3-9736 (Three Lines)  
Western Union: WUX

1235 W. Fifth St.  
DAVENPORT, IOWA

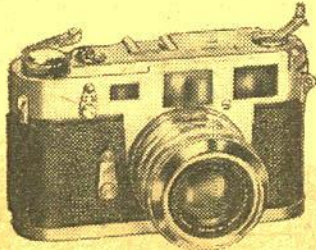
Hours: Monday through Friday, 9:00 A. M. to 5:00 P. M.—closed Saturdays, Sundays and Holidays. Effective June 1, for the summer, we will also close Wednesdays at noon. Davenport is on Central Standard Time—two hours behind Eastern Daylight Time—one hour behind Eastern Standard Time or Central Daylight Time—one hour ahead of Mountain Standard Time or Pacific Daylight Time—two hours ahead of Pacific Standard Time.



## THE RUINS OF SAN FRANCISCO, 1906

Here is an authentic historical film showing the destruction to the city of San Francisco resulting from the earthquake and fire of 1906. Copied by us from the original in the George Kleine Collection at the Library of Congress, the segments of this film are presented exactly as released to the nickelodeons by the Edison Company, even to the original titles. Of course, before the days of formal newsreels, when most news was single reel or split reel material, this film was much to be desired when viewed by the standards of today—or even of twenty or thirty years ago. Cameras were not available to catch the earthquake or the burning of the city, so the ruins shown were photographed some days later as the clean-up of the rubble was in progress.

"The Ruins of San Francisco, 1906,"  
about 100-feet, 8mm. **\$3.99**

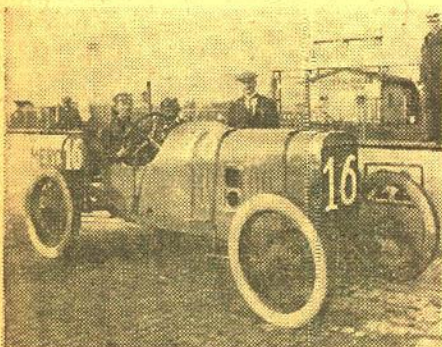


## The New AIRES-III-C 35mm. CAMERA

- (1) New AUTOMATIC PARALLAX COMPENSATION
- (2) New F:1.9 6-element lens
- (3) Built-in self-timer
- (4) Brilliant "trimming" type single window range and viewfinder
- (5) Deliberate double-exposure

The New Aires III-C has an F:1.9 amber-coated Coral 4.5-cm. 6-element lens, fully synchronized Seikoshia FMX shutter with shutter speeds of R. 1, 1/5, 1/10, 1/25, 1/50, 1/100, 1/250 and 1/500 together with built-in self-timer; single-action lever to wind film and automatically cock shutter permits twelve pictures being taken in ten seconds; double exposure prevention device may be deliberately locked out to permit double exposures when you want them; automatic exposure counter with automatic zero setting and film rewind counter; coupled range-finder focusing from 20-inches (without auxiliary close-up lenses) to infinity; LVS coupling of lens and shutter from 8 to 16.

Aires III-C 35mm. Camera, complete with Deluxe Chrome-Trimmed Leather Carrying Case, combined list price, \$123.50, our No. 10-06, only **\$99.95**



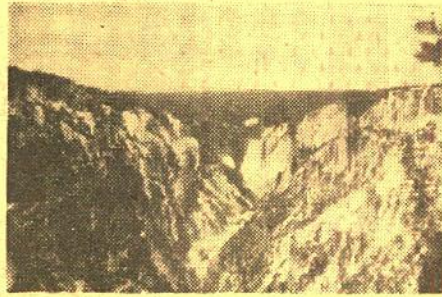
Memorial Day Special!

2"x2" SLIDE SET (B. & W.)

## INDIANAPOLIS SPEEDWAY WINNERS 1911-1954

Here are close-up shots of every Indianapolis Speedway winner, in the winning car, from the first race of 1911 through 1954. The span of 44 years takes us from some pretty tall and flimsy-looking specimens—which won at average speeds of 74.59-mph. (1911) to some low-slung, sleek numbers that did it at an average of 130.84-mph. in 1954. A great collection. Contains 34 captioned 2"x2" black and white slides!

BLACKHAWK'S REGULAR PRICE, \$2.49  
"Indianapolis Speedway Winners, 1911-1954," Slide Set No. 25, Specially priced at only **\$1.29**



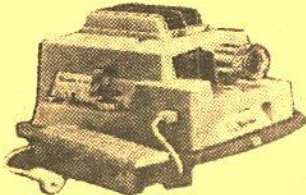
New 2"x2" Color Slide Set . . .

## YELLOWSTONE

THE GRAND CANYON, FALLS,  
RIVERS AND LAKE

Here's a set of thirteen color slides that supplements our three other sets on Yellowstone which covered the geysers and hot springs, the animals, and the Park in winter. Photographed by Leroy Strickland, this group will be a highly satisfactory addition to your collection.

"Yellowstone—The Grand Canyon, Falls, Rivers and Lake," Blackhawk Slide Set No. 142,  
13 2"x2" color slides **\$1.98**

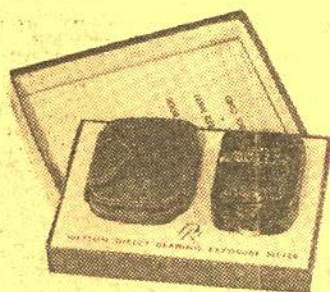


## KEYSTONE K-500-A AUTOMATIC 500-WATT, 2"x2" SLIDE PROJECTOR

The 2"x2" slide projector that has everything—fully-automatic, remote control timer-changer—semi-automatic remote control push-button cord—eye-ease filter—super slide condenser. All you do is look—almost! Your slides change by remote control at the time intervals you set—5-seconds to 60-seconds or when you press the button. And between slides there is no glare or blackout to hurt your eyes. The Eye-ease filter takes care of that by projecting a restful blue light.

The Keystone K-500-A with the super slide condenser will show any 2"x2" slide—Bantam, 35mm., super-slide—in glass, metal or cardboard mounts. Every type of slide is projected with maximum center-to-corner brightness. In self-contained case for ease in carrying and storing. Manufacturer's list price, \$124.50.

Keystone K-500-A Automatic 2"x2" Slide Projector, our No. 16-12, only **\$79.95**



Special Purchase!

## WESTON DIRECT READING EXPOSURE METER MODEL 853 DR

SAVE AN EVEN FIVE BUCKS FROM  
ITS \$16.95 LIST!

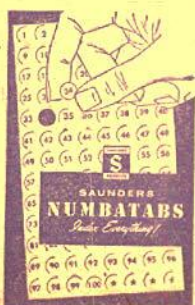
Direct reading in f/stops for use with any still or movie camera. One setting only. Calibrated to ASA standards for film speeds. This current Model 853DR listing at \$16.95 is soon to be slightly modified with the list price increased to \$18.95. Buy now and save!

Weston Direct Reading Exposure Meter Model 853DR, our No. 39-08, Blackhawk priced at **\$11.95**

## NUMBATABS

These wonderful little index tabs stick (without moistening) to any clean surface. Originally put out to index color slides, they have countless other uses. If you make a mistake, tabs can be pulled off and used again.

Numbatab Sets, numbered from 1 to 500, our No. 15-03, per set **98c**



## The New YASHICA 635 6x6cm/35mm. CONVERTIBLE REFLEX

Takes twelve 2 1/4-square pictures on 120 film, 20 or 36 exposures on 35mm. film. The "635" features semi-automatic film advance on both film sizes, with rewind provision for 35mm.

Other features include: twin f/3.5 Yashikor lenses, coated and color-corrected; field-lens focusing screen (for 120 and 35mm.); shutter speeds from 1 to 1/500 second and Bulb; knurled knobs for setting lens opening and shutter speed (visible from above); M and X flash synch; delayed action timer; eye-level sports-finder (for 120 and 35mm.); magnifier; depth of field scale; leather covered die-cast aluminum body; supplied with deluxe velvet-lined, leather compartment case. Manufacturer's list price, \$69.95.

Yashica 635 6x6cm/35mm. Convertible Reflex Camera, our No. 10-10, Blackhawk priced at **\$54.95**



## The New YASHICA 44 4x4cm REFLEX CAMERA

Accepts standard 127-size film—takes 12 pictures in black and white or color (Superslide size). Features a unique, spring loaded film wind crank which snaps back into position after wind.

Other features include: twin 60mm. f/3.5 lenses, coated and color-corrected; shutter speeds from 1 to 1/500 second and Bulb; M-X flash synch; delayed action timer; field lens focusing screen; eye-level sports-finder; magnifier; die-cast aluminum body, finished in gray leather. Manufacturer's list price, \$59.95 for camera, plus \$10.00 for everyday case.

Yashica 44 4x4cm Reflex Camera, our No. 10-11, Blackhawk priced at only **\$44.95**

SOLD ONLY IN COMBINATION WITH  
Eveready Case **\$7.95**

TOTAL PRICE OF COMBINATION, \$52.90



## YASHICA MODEL A 2 1/4"x2 1/4" REFLEX CAMERAS

Shutter speeds of 1/25 to 1/300, bulb and flash synchronization (for instantaneous strobe). No. 5 flash lamps at 1/25 and No. SM flash lamps at 1/500. Eye level sports finder. Flash run shoe with standard PC flash terminal. F:3.5 taking and viewing lens, coated. Case of genuine leather. Manufacturer's list price, \$34.95.

Yashica Model A 2 1/4"x2 1/4" Reflex Camera, our No. 10-12, Blackhawk priced at only **\$27.95**

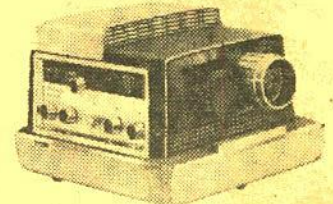


8mm. Keystone Comedy . . .

## HIS BITTER PILL with MACK SWAIN

Here's a great Keystone Comedy of the 1916 era, produced by Mack Sennett and originally distributed by Triangle. It stars Mack Swain as the sheriff with a heart of gold who falls in love with a girl of the golden west who is also being chased by a slicker. Of course, everything comes out all right in the end—but not until after Mack has almost dangled at the end of a rope himself.

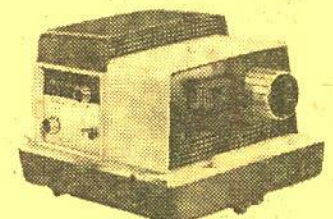
"His Bitter Pill," about 300-feet,  
8mm., on two 200-ft. reels **\$8.98**



## THE BEST-SELLING BALOMATIC 500 2"x2" SLIDE PROJECTOR

Here's the famous slide projector that ALWAYS STAYS IN FOCUS! The Balomatic 500—made by Bausch and Lomb—takes all 2"x2" slides—including Super Slides. It has fully automatic cycling, fingertip automatic, and optional remote control; all controls grouped on central illuminated panel; Balcoted 5-inch F:3.5 lens; 40-slide tray and case. Built-in carrying handle is part of projector—not of case—so projector can't fall out of case! Manufacturer's list price, \$149.50.

Balomatic 500 2"x2" Slide Projector, our No. 16-13, Blackhawk priced at **\$109.95**



## BALOMATIC 300 2"x2" SLIDE PROJECTOR

The most advanced fingertip-automatic available. Has many of the exclusive "500" features, including illuminated central control panel, 40-slide tray and case, but not the automatic cycling feature. Has 4-inch F:3.5 lens and 300-watt lamp. Manufacturer's list price, \$84.50.

Balomatic 300 2"x2" Slide Projector, our No. 16-12, Blackhawk priced at only **\$64.95**

Special Purchase!

RECEIVED JUST AS WE WENT  
TO PRESS!

## 2"x2" SLIDE SETS ON WORLD WAR II

These 2"x2" slide sets each contain twenty (20) regular double frame slides in black and white, each slide is captioned, and each set of twenty is packed in a labeled carton. For everyone with a 2"x2" slide projector—here's an opportunity to get excellent coverage of World War II—at very low cost!

Price per set **79c**  
All twelve sets, purchased together **\$7.99**

Here are the twelve set titles:

- WW1—PEARL HARBOR, JAP ATTACK
- WW2—SAIPAN
- WW3—TARAWA
- WW4—HOLLANDIA
- WW5—GUAM
- WW6—IWO JIMA
- WW7—OKINAWA
- WW8—NORMANDY INVASION
- WW9—INVASION BEACHHEAD
- WW10—PATTON BREAKS OUT
- WW11—INVASION OF SOUTHERN FRANCE
- WW12—THE SEVENTH DRIVES NORTH

## FROGMEN, THE UNDERWATER EXPLORERS

New techniques of underwater exploration has been developed as a result of the daring exploits of the frog-divers during the war. Gone is the cumbersome diving equipment formerly necessary. We go along with one of the modern "frogmen" of the British Admiralty Underwater Research Station, and see the sunken troopship, the Breconshire, off Malta. We also are participants on underwater photographic tests of a modern submarine launching its torpedoes. A strange new world is revealed to us by the modern frogmen.

"Frogmen, the Underwater Explorers,"  
about 150-feet, 8mm., only **\$3.99**





# MORE SPRING SPECIALS IN USED 16mm. SOUND PROJECTORS!

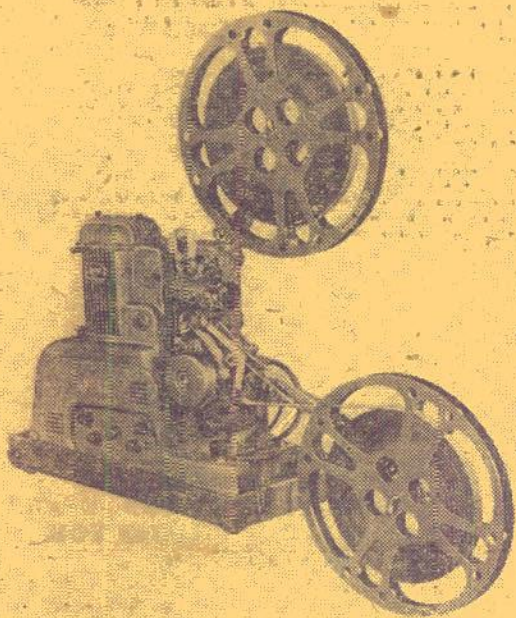
For years, Blackhawk has had the policy of buying all good used 16mm. sound projectors of standard models on which replacement parts were available from the manufacturers. But since last fall, used units have been coming our way in ever increasing quantities, and our inventory is now the highest it has been for two or three years. To trim it down, we've cut from our regular already low prices 10%, 15% and even 20%. So, if you're in the market for a good used unit, now is the time to buy!

Projector prices are exclusive of transportation and projectors, because of weight, are not mailable. For most destinations, Railway Express is the most satisfactory method, but we'll be glad to ship by freight—either truck or rail—if you request. Projectors will not be shipped C.O.D. without a deposit of \$25.00 to guarantee transportation charges.

## AMPRO PARAMOUNT 20

Manufactured in 1947 and 1948. Has 15-watts amplification and 12-inch speaker. Does not operate in reverse.

**\$166.66**



## AMPRO STYLIST (Single Case)

Manufactured between 1949 and 1952. Has 4-watts amplification and 8-inch speaker. Operates at sound speed only. Does not operate in reverse.

**\$149.99**

## AMPRO PREMIER 30

Manufactured between 1950 and 1953. Has 15-watt amplifier, 12-inch P. M. speaker, and operates at both sound and silent speeds in both forward and reverse.

**\$199.95**

## AMPRO PREMIER 20

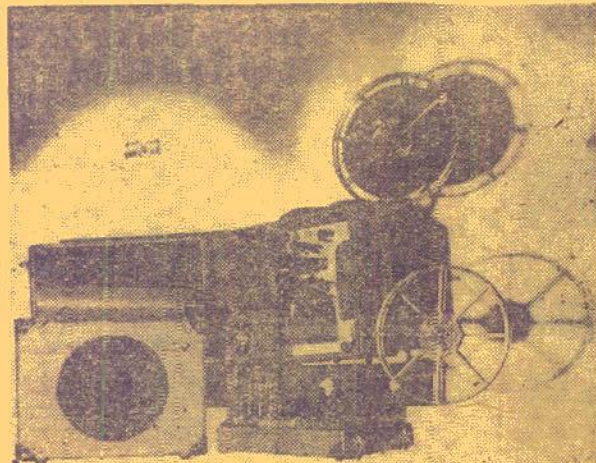
Manufactured between 1947 and 1949. Has 15-watts amplification and 12-inch speaker. Operates both forward and in reverse, at both sound and silent speeds.

**\$166.66**

## AMPRO STYLIST (Single Case)

Manufactured between 1949 and 1952. Has 4-watts amplification and 8-inch speaker. Operates at sound and silent speeds. Does not operate in reverse.

**\$177.77**



## DeVRY RS

Manufactured between 1941 and 1948. Has 30-watts amplification and 12-inch PM speaker. Operates at both sound and silent speeds.

**\$112.22**

## GOOD USED 16mm. SOUND PROJECTORS

only **\$99.95** each

For the first time in months we have a selection of good used 16mm. sound projectors in the \$99.95 price bracket. But our stock is very, very limited—and we recommend that you give us second and third choices of make and model.

AMPRO MODEL Y (Single case)  
EASTMAN KODASCOPE MODEL FS-10-N (Two case)  
MOVIE MITE MODEL 63 (Single case)  
NATCO 3019 (Two case)

## AMPRO COMPACT (Single Case)

Manufactured between 1948 and 1951. Has 5-watts amplification and 8-inch speaker. Operates at both sound and silent speeds. Does not operate in reverse.

**\$166.66**

## BELL & HOWELL 138

Manufactured between 1936 and 1940. Has 6-watts amplification and 8-inch speaker. Operates on 60-cycle, AC only. Is equipped with 750-watt lamp and 2-inch focal length projection lens. Takes up to 1600-foot capacity film reels. Has motor-driven rewind. Most of these units operate at sound speed only—but a few operate on silent speed also.

**\$109.99**

## BELL & HOWELL 142

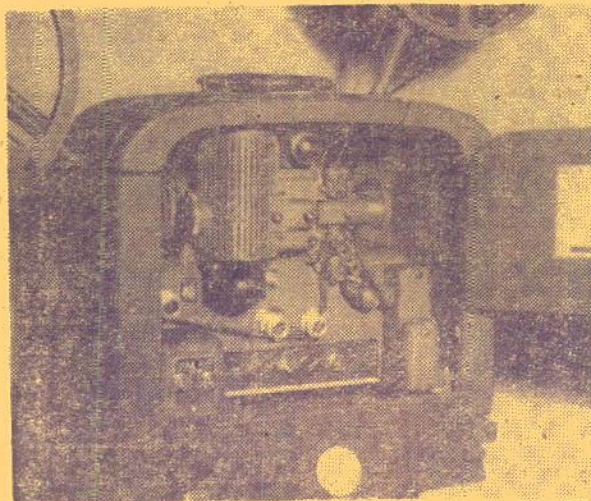
Manufactured between 1939 and 1941. Has amplifier of 18-watts capacity and 12-inch speaker.

**\$133.33**

## BELL & HOWELL 156

Manufactured between 1942 and 1945. Has 15-watt amplifier and 12-inch speaker.

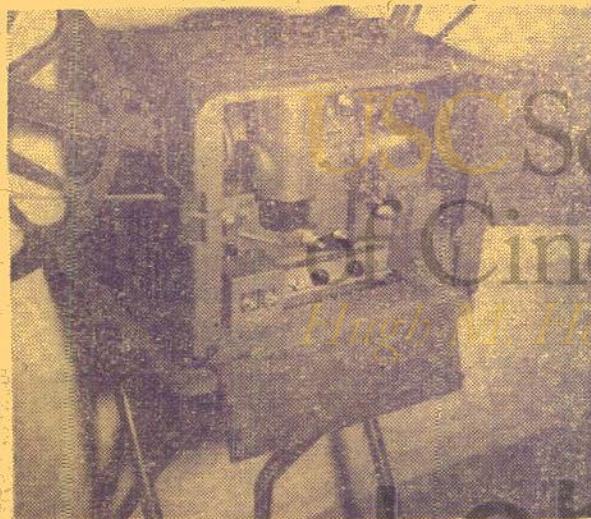
**\$144.44**



## BELL & HOWELL MODEL 185

Manufactured between 1949 and 1951. Two case unit operating at both sound and silent speeds, and in reverse. Still picture clutch. Motor driven rewind. Has 10-watt amplifier, 8-inch PM speaker, microphone input.

**\$199.95**



## BELL & HOWELL MODEL 179

Manufactured between 1945 and 1949. Two case unit operating at both sound and silent speeds, and in reverse. Still picture clutch. Motor driven rewind. Has amplifier of 10-watts capacity, 12-inch PM speaker, microphone input.

**\$177.77**

# SOUND PROJECTORS!

## DeVRY-TSI 5R

Virtually current model. Has 10-watt amplifier, 6-inch P. M. speaker, and operates at both sound and silent speeds, and in reverse. Our units of this model are in especially fine condition.

**\$189.95**

## DeVRY-TSI DU-5 (The Duolite)

Current model. Here is the very flexible projector with its own 140-square inch translucent screen for rear desk top projection—or for regular projection to tripod or wall screen. Has 5-watt amplifier, 6-inch P. M. speaker, and operates on both AC and DC. Our units of this model are in especially fine condition.

**\$199.95**

## DeVRY BANTAM (Single Case)

Manufactured between 1952 and 1954. Has 5-watts amplification and 6-inch speaker. Operates on 60-cycle, AC only. Has 750-watt lamp, 2-inch projection lens. Takes up to 1600-foot capacity film reel. Has motor-driven rewind—operates at both sound and silent speeds.

**127.77**

## DeVRY SUPER 16

Manufactured between 1949 and 1952. Has amplifier of 15-watts capacity, 12-inch PM speaker, 750-watt projection lamp, 2-inch standard projection lens. Operates at sound speed on 60-cycle AC only. Has motor-driven rewind. Takes up to 2000-foot capacity film reels.

**155.55**

## EASTMAN KODASCOPE PAGEANT (Single Case)

Manufactured between 1949 and 1954. Has 5-watts amplification and 6-inch speaker. Does not operate in reverse. Runs at sound speed only.

**\$199.95**

## NATCO 3030 (Single Case)

Manufactured between 1948 and 1951. Has 5-watts amplification and 8-inch speaker. Does not operate in reverse. Runs on either AC or DC.

**\$109.95**

## RCA 400 SENIOR

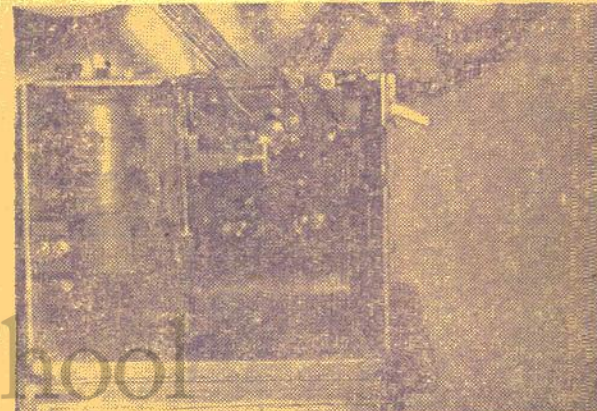
Manufactured beginning in 1947, still current. Has amplifier of 10-watts capacity, 10-inch speaker. Does not operate in reverse. The most popular seller of all current model 16mm. sound projectors, and perhaps the finest yet built. Speed is governor controlled.

**\$169.95**

## VICTOR 40B

Manufactured between 1941 and 1947. Amplifier has output of approximately 26-watts, speaker is 12-inch diameter PM type. Operates at both sound and silent speeds, and in reverse. Has still picture clutch.

**\$119.95**



## VICTOR MODEL 55

Manufactured between 1947 and 1949. Single case unit operating at both sound and silent speeds, and in reverse. Still picture clutch. Motor driven rewind. Has amplifier of 5-watts capacity and Alnico V oval speaker, 4"x6".

**\$155.55**

## VICTOR 56 (Single Case)

Manufactured in 1951. Has amplifier capacity of 4-watts, 4" x 6" oval, top-mounted speaker. Operates on both AC and DC.

**\$155.55**

## VICTOR 60B

Manufactured in 1947 to 1949. Has 26-watt amplification and 12-inch speaker. Stamped aluminum alloy carrying cases for projector and speaker.

**\$166.66**



# Wild Life

**2"x2" COLOR SLIDES**  
**8mm. COLOR MOVIES**  
**16mm. COLOR MOVIES**  
**8mm. B&W MOVIES**  
**16mm. B&W MOVIES**

All 16mm. prints—both color and B&W—are silent versions—sound versions are not available.

## WILD LIFE MOVIES, IN 16mm. AND 8mm. COLOR AND BLACK & WHITE

50-ft., 8mm.  
color prints, ea.

**\$5.99**

50-ft., 8mm.  
B&W prints, ea.

**\$1.69**

100-ft., 16mm.  
color prints, ea.

**\$9.99**

100-ft., 16mm.  
B&W prints, ea.

**\$3.49**

### AMERICAN BISON—No. 111

A nearly extinct species—although at one time 50 million roamed the North American plains. Wild Life Films shows a great Bull paw away the snow to find his feed. A mother and suckling calf—hulking bulls crossing meadows and streams and feeding with the herd—summer and winter close-ups of calves, yearlings and adults.

### AMERICAN DEER—No. 105

Just beautiful! The shy, beautiful Mule Deer with his great ears and big eyes—and White Tail Deer with their flashing white tails—a hunter's dream of magnificent antlers—close-ups of them feeding, walking and running—also, a mother with her twins (a dandy sequence) . . . A yearling is also shown "in the velvet", with his half grown antlers—educational and entertaining.

### ANIMALS OF THE FOREST—No. 113

Snap! Crackle! Pop! Sure you have heard those sounds while in the woods and forests—and wondered what it was that scurried from sight! Here you are—our cameramen have brought you scenes of creatures you would spend months trying to get a glimpse of let alone a picture—BEAR, DEER, ELK, PORCUPINE, COUGAR, CHIPMUNK, MOOSE and the rarest of all, the PINE MARTEN.

### ANIMALS OF THE PLAINS—No. 114

Somebody knock? There's nobody home! And the plains looks that way to most people. The Prairie Dog, Badger, Pocket Gopher and Rabbits all stay close to their burrows or hole because Mr. Coyote is constantly hunting them. While the Pronghorn Antelope should be so easy to see his speed and eyesight keep him out of distance from the harried cameramen. Mr. Buffalo doesn't worry too much because he's big enough to take care of himself. You will thrill at all these creatures of the plains in this spectacular film.

### BEARS—No. 100

Brown Bear, and Grizzly Bear shown in this film. The closest you'll ever see them—in the summer and winter. Mother teaching her cubs—Papa putting his mark on a great tree—shaking himself, crossing a log, peering around a tree like an inquisitive archer, ambulating through the woods—Mr. and Mrs. Bear at their very best.

### BIG HORN SHEEP—No. 103

Astounding close-ups of the wildest and scariest of all wild creatures. See them leap from rim rock to crag, like birds in flight. Shown are the tiny lambs up to the full horned rams. Single animals and groups, feeding, running, jumping in their high mountain homes. To you folks who have been fortunate enough to have hunted these Big Horns you will readily see the effort that has gone into the photography of these wild creatures.

### BIRDS OF THE FOREST—No. 115

Most people have seen the Nut Hatch, Clarks Jay, Woodpecker, or Mountain Raven while in the forest. But, how many have watched the Blue Grouse, or Wild Turkey or had an Owl hoot at you from some tree top—or maybe teased a Golden Eagle into getting his picture taken. These are all in "Birds of the Forest", PLUS a rare scene of two Trumpeter Swans on their nest on the middle of a beaver dam deep in the heart of the forest.

### BIRDS OF THE PLAINS—No. 116

From the opening sequence of two Sharp-Tailed Grouse fighting over their lady fair, to the beautiful sundown shot of the Golden Eagle flying in to nest, you will be held spellbound, with beauty and action. See the red breasted Robin catching worms; Swallows gathering mud to build nests; the happy Meadow Lark singing his song we all love, and a Sage Grouse strutting scene. You'll see the difference between the Sage Grouse and the Sharp-Tail Grouse. A day with Birds on the Plains—delightfully different.

### BIRDS OF THE MARSH—No. 117

Have you ever been in a Duck blind real early before daylight and listened to the odd songs all around you? Something about it you'll never forget. Sit still . . . over in the reeds is a Black-This, close by a Yellow-headed Blackbird singing his heart out; also, the Red-Winged Blackbird; while just below him the female is feeding her young. In the short grass the Black Necked Stilt is settling on its nest. Blue Herons and Snowy Egrets are flying in to land—too, the marsh would not be complete without a few Coots. Imagine seeing all these birds again without getting out of your easy chair.

### BUSY BEAVER—No. 101

Commonly known as "Nature's Engineers" this film actually shows him swimming under water—building his dam—close-ups of tiny baby beaver and the adults with their broad flat tails, on land and in the water—always busy and always at work. Being a nocturnal creature he is seldom photographed—but, Wild Life Films really got the job done!

### CANADIAN GOOSE—No. 104

Shown are literally thousands of these majestic birds in flight—and too, their fascinating V-formation when they migrate. Take-offs and landings of these huge birds galore—the nest, the goslings at play (baby geese) and on parade. The adults feeding and swimming in high, lonely inland lakes. As fine a bird picture as ever photographed.

### COYOTE—No. 107

Tiny pups and howling adults—marvelous shots of this most wary of animals, hunting and cray-fishing, ever on the alert. The family at play—sneaking through brush and tall grass. A complete life story on film of this sly, crafty, and most intelligent of North American animals.

### DUCKS—No. 118

Fifteen wonderful scenes showing Ducks courting, feeding, flying, and swimming. Included are Greenheads—Blue Winged Teal—Pintails—Spoonbills—Widgeons and Canvas-Backs . . . a must film for the new hunter to identify his Ducks.



### FISHING OFF THE ENCHANTED ISLANDS—No. 121

An overnight ride from San Felipe, Mexico, by boat, our cameramen bring you a fishing movie that everyone will truly enjoy. Bahia Bass—thirty and forty pounders. Umita Bass, and even Trigger Fish. Shown too, is one of the most outstanding shots of a Porpoise ever filmed—a twenty foot leap in slow motion—beside there is plenty of fish action in this one.

### FISHING OSPREYS—No. 126

See this massive "eagle-like" bird dive unerringly from tremendous heights to scoop its fish dinner right from the surface of the water. Thrill to the "aero-batics" performed by this bird with the 5/4 foot wing spread. Unequaled wild life photography.

### LEAPING TUNA—No. 112

Thousands of them—leaping, jumping, fighting to the end. Some small enough to be taken on one pole—others so large that three grown men with three poles are needed to land them. A fisherman's Paradise.

### MOOSE—No. 110

The biggest of all North American game animals—shown how they have to eat on the knees—plowing through deep snow like a bulldozer—swimming lakes and rivers—the tiny ugly baby and his mother—half grown calves. Close-ups of huge bulls feeding and running through summer meadows and winter snows. Not too tough to photograph when you are there—but, it does take a bit of courage, you folks who have tried to photograph these creatures know it takes a bit more than a little courage!

### MOTHER BEAR AND CUBS—No. 120

Wild Life Films brings you close to the "Madonna of the Wilderness". Sequences of these bear mothers, rarely photographed, actually nursing their babies. Life to them is precious and when hungry the mother feeds them just like any human mother. Everyone loves to see bears and especially baby bears.

### MOUNTAIN LION MOTHER & KITTENS—No. 119

How tiny these little mountain lion babies! You'll see a hundred pound mother and her three babies—each less than two pounds apiece. Few folks have ever seen a live, free cougar, or mountain lion, unless it has been tamed by dogs. Let alone seeing the kittens with their mother—a film never to be forgotten.

### MULE DEER—No. 125

See the startled Mule Deer bound through the rugged canyons as though propelled by giant coiled springs as it avoids its enemies. See the entire life cycle of the mule deer family right in its own natural habitat. The photography is priceless.

### PRONGHORN ANTELOPE—No. 108

Graphic shots of babies, yearlings and adults—at the water hole, in the brush, in the open meadows of the plains, under summer sun and in winter snows. The doe hiding its fawn, fawns browsing in the brush or bounding at their mother's side—excellent close-ups of adult bucks . . . have you ever tried to photograph an Antelope? Believe it or not the baby Antelope is one of the hardest to find in the world.

### RED-TAILED HAWKS—No. 123

One of the most beautiful and helpful of all hawks—continually helping to keep down the rodent population. A rare scene of the Mother Red-Tailed Hawk feeding her babies perched high in a crotch of the Saguaro cactus. The mother takes off from her nest—sipping a Ground Squirrel nibbling on a cactus she wheels and turns; dives and soon there is food for her hungry and crying young. Photographed in the heart of Arizona in all its wild and rugged beauty.

### ROCKY MOUNTAIN ELK—No. 102

A very unusual sequence shown in this one. An hour old baby taking his very first stumbling steps and the mother calling to her baby. A huge Bull feeding and scratching himself with his right hind foot—close-ups galore of individuals, groups, and herds—photographed in both summer and winter.

### ROCKY MOUNTAIN RAINBOWS—No. 124

To you fishermen who know the thrill of a beautiful Rainbow hitting your fly . . . you will live and relive those fishing trips of the past and of the ones to come while showing "Rocky Mountain Rainbows". Shown is the shot in a million—a trophy Rainbow actually hitting the fly—breaking and churning . . . and, done in slow motion. Others shown being caught weighed from four to five pounds. This film is edited in a manner to be screened by itself or may be spliced right into your own movie as though you were the fisherman on the other end of the line.

### SAGE GROUSE—No. 109

Colorful movie story of this fine game bird. Males, strutting and fighting in the mating season—see them puff, blow, and strut, and fight! The amazing ability of the young to camouflage themselves. The nest with the baby chicks—the big brilliant feathered cocks beautiful only in strutting season and demure hens, nesting, feeding, and in flight.

### SNAKES—No. 122

Nearly everyone chills at the sight of snakes, and many fear them—but, for sure your audience will be intensely interested. A fine motion picture study of FIVE DIFFERENT SNAKES—THE KING SNAKE—THE PINK BELLED RACER—THE RED RACER—THE BULL SNAKE and a fourteen button, eight foot PRAIRIE RATTLER coiled and ready to strike—all scenes so close you would not want to be the photographer.

### SPOTTED FAWN—No. 106

Baby Deer photographed from one hour to one month old—playing, feeding, running, in very close-up shots. See how affectionate they are with one another—their tremendous bounding speed; real poetry in motion. Excellent sequence of baby fawn running directly at camera.

### WHITETAIL DEER—No. 127

The most hunted animal in North America. Four and a quarter million populate the continent. See this fleet-footed creature escape from danger with an incredible burst of speed. Film shows complete life cycle from spinny 5 pound fawn to full grown 200 pound buck.

## WILD LIFE and WILD FLOWER

### 2"x2" COLOR SLIDE SETS

Eight 2"x2" color slides per set, each set . . . **\$1.49**

Any three sets, purchased together at one time, only . . . **\$3.99**

Any eight sets, purchased together at one time, only . . . **\$9.99**

### Wild Life 2"x2" Color Slides

#### No. 144—AFRICAN BIG GAME

Contains: Lions, elephants, impala, giant bustard, Uganda kob, ram, Grant's gazelle and Thompson's gazelle.

#### No. 143—BIG GAME COUNTRY

Contains: Zebra and topi, bull buffalo, cheetah, bull hippopotamus and black rhinoceros.

#### No. 87—MOUNTAIN LIONS

Contains: Baby mountain lion (4 slides), two baby mountain lions, three baby mountain lions, mother mountain lion and mother mountain lion with baby. (Formerly Wild Life Set No. Nine.)

#### No. 130—SNAKES OF THE NORTHEAST

Contains: Northern ring necked snake, smooth green snake, Northern pine snake, milk snake, DeKay's snake, Northern copperhead snake, common garter snake and timber rattlesnake.

#### No. 131—SNAKES OF THE SOUTHEAST

Contains: Indigo snake, corn snake, blotched chicken snake, four lined chicken snake, Florida pine snake, scarlet king snake, scarlet snake and Eastern diamond-backed rattlesnake.

#### No. 132—SNAKES OF THE SOUTHWEST

Contains: Western coachwhip snake, California striped whip snake, Texas whip snake, Texas glossy snake, California king snake, long nosed snake, Marcy's gartersnake and rock rattlesnake.

#### No. 145—WILD ANIMALS OF THE AFRICAN PLAINS

Contains: Giraffe, ostrich, water buck, whitebearded wildebeest, wildebeest and hartebeest.

#### No. 79—WILD LIFE SET No. One

Contains: Baby porcupine, coyote, big horn sheep, baby blue heron, mule deer buck, cow moose, elk calf and black bear cubs.

#### No. 80—WILD LIFE SET No. Two

Contains: Baby Canada goose, bull moose, coyote pup, black bear, prairie dog, antelope, elk calf and big-horn sheep ram.

#### No. 81—WILD LIFE SET No. Three

Contains: Young horned owls, antelope, mother moose and calf, white footed mouse, prairie dog, bull elk, buffalo and beaver.

#### No. 82—WILD LIFE SET No. Four

Contains: Elk calf, trumpeter swans, pocket gopher, young red squirrel, pack rat, raccoon, prairie dog family and antelope nursing twins.

#### No. 83—WILD LIFE SET No. Five

Contains: Baby trumpeter swan, marmot, blue goose, buffalo nursing baby, prairie rattlesnake, grizzly bear cub, coyote howling and mountain lion.

#### No. 84—WILD LIFE SET No. Six

Contains: Raccoon, mule deer buck, bobcat, wild turkeys, cottontail rabbit, cony or pika, yellow pine chipmunk and elk bulls.

#### No. 85—WILD LIFE SET No. Seven

Contains: California gull, baby red wing blackbirds, whitetail jack rabbit, bull moose in velvet, bobcat, three antelopes, buffalo portrait and mother elk and calves.

#### No. 86—WILD LIFE SET No. Eight

Contains: Sage grouse hens, jumping mouse, broadtail humming bird, desert horned lark, cow moose in winter, buffalo herd with calves, sand-hill crane nest and young, grizzly bear cub.

#### No. 88—WILD LIFE SET No. Ten

Contains: Columbia black tailed deer—doe and fawn (1 slide) and fawn (1 slide), wandering garter snake, skunk, Canada jay or camp robber, mallard duck, sand hill crane and young golden eagle.

#### No. 89—WILD LIFE SET No. Eleven

Contains: King snake, gila monster, Arizona black tailed jack rabbit, baby stellar sea lion, white-tail deer fawn, female deer fawn, female red wing blackbird, killdeer and eggs, young red-tailed hawks in nest.

#### No. 90—WILD LIFE SET No. Twelve

Contains: Desert tortoise, gray fox, desert horned toad, baby cottontail rabbit, mule deer fawn, stellar bull sea lion with harem, ring billed gull in flight and blue jay.

#### No. 91—WILD LIFE SET No. Thirteen

Contains: Young flying squirrel, badger, male cardinal, kangaroo rat, bull snake, green collared lizard, beaver (close-up) and Palmer thrasher.

### Wild Flower 2"x2" Color Slides

#### No. 92—WILD FLOWER Set No. One

Contains: Forget-Me-Not, sagebrush buttercup, prickly pear, western golden rod, butterfly on rabbit brush, sumac, fireweed and balsam root.

#### No. 93—WILD FLOWER Set No. Two

Contains: Paintbrush (2 slides), yellow monkey-flower, moon rose, stonecrop, swamp laurel, stonewort and blue flax.

#### No. 94—WILD FLOWER Set No. Three

Contains: Violet, moss champion, wyethia, balsam root, bitter root, Oregon grape, wild sweet pea and California poppy.



# "MUSIC FOR MEN" on 33 1-3 r.p.m. LP records

## Theatre Pipe Organ

### BILL THOMSON PLAYS ROGERS AND HAMMERSTEIN ON THE MIGHTY WURLITZER PIPE ORGAN

Pacific No. 2003, 12-inch, \$3.98. Contains: Shall We Dance; Whistle a Happy Tune; Hello Young Lovers; March of the Siamese Children; Getting to Know You; People Will Say We're in Love; Surrey with the Fringe on Top; It Might As Well Be Spring; It's a Grand Night for Singing; If I Loved You; June Is Bustin' Out All Over; Hail Hail! Some Enchanted Evening; There is Nothin' Like a Dame.

### GEORGE WRIGHT PLAYS THE MIGHTY WURLITZER PIPE ORGAN

Hifirecord No. R-701, 12-inch, \$4.95, contains: Jalousie, Ebb Tide, Caminito, Boogie, Angella Mai, Reller Coaster, The Boy Next Door, Brazil, Stella by Starlight, Love for Sale, Dancing Tambourine, Stars and Stripes Forever.

### GEORGE WRIGHT ENCORES ON THE MIGHTY WURLITZER PIPE ORGAN

Hifirecord No. R-702, 12-inch, \$4.95, contains: Slaughter on Tenth Avenue, Tumbling Tumbleweed, Brazilian Sleigh Bells, Silver Moon, Sentimental Journey, Anna, Chit Chat Polka, Quiet Village, Petite Waltz, American Patrol.

### GEORGE WRIGHT'S SHOWTIME

Hifirecord No. R-703, 12-inch, \$4.95, contains: There's No Business Like Show Business, My Funny Valentine, The Lady Is a Tramp, Little Girl Blue, The Man I Love, Just One of Those Things and Showboat Medley (All of the Hit Tunes from Jerome Kern's "Showboat"—one complete side of record).

### THE GEORGE WRIGHT SOUND

Hifirecord No. R-710, 12-inch, \$4.95, contains: Chloee, Mood Indigo, Beyond the Sea, Honky Tonk Train, The White Dove, From This Moment On, I Love Paris, Bubbles, Bangles and Beads; I Got It Bad, The Whistler and His Dog, When You Wish Upon a Star, Dizzy Fingers.

### THE GENIUS OF GEORGE WRIGHT

Hifirecord No. R-713, 12-inch, \$4.95, contains: Espana Cani, If I Had You, Hernando's Hideaway, Around the World, Song of the Islands, By the Beautiful Sea, Midnight Bells, Wabash Blues, My Last Melody, Tea for Two, The Song is Ended, Strike Up the Band.

### GEORGE WRIGHT'S IMPRESSIONS OF MY FAIR LADY

Hifirecord No. R-715, 12-inch, \$4.95, contains: Overture, Why Can't the English?, Wouldn't It Be Lovely?, The Rain in Spain, I've Grown Accustomed to Her Face, With a Little Bit of Luck, A Sweet Gavotte, Show Me, I Could Have Danced All Night, Get Me to the Church on Time, On the Street Where You Live, Exit Music.

### MATINEE with ARSENE SIEGEL at the four-manual WURLITZER in CHICAGO'S ORIENTAL THEATRE

Replica No. 33x513, 12-inch, \$4.98. Contains: My Treasure, Let a Smile be Your Umbrella, In a Little Spanish Town, I'm Always Chasing Rainbows, Silver Moon, Softly in the Morning Sunrise, My Blue Heaven, Saber Dance, Ramona, Ukulele Lady, Viennese Bon Bons, Me and My Shadow and Dinah.

### PIPE ORGAN IN THE MOSQUE with REGINALD FOORT at the GIANT WURLITZER in the Mosque in Richmond, Virginia

Cook No. 10501, 12-inch, \$4.98. Contains: In a Persian Market, Giselte Waltz, Bells of St. Mary, Coppelia Waltz, Zampa Overture, Scotch Medley, Liszt's Second Hungarian Rhapsody, Flight of the Bumble Bee, Tschalkowsky's Sleeping Beauty Waltz, Parade of the Wooden Soldiers, Greig's Nocturne, Orpheus Overture and Jalousie.

## Circus, Carnival, Show Boat and Speakeasy Music

### CALLIOPE AND CAROUSEL

Cook No. RR5010, 12-inch, \$4.98. Steam calliope, three carousels and a hand organ. "These are gems. So gorgeously out of tune you can only gasp with pleasurable anguish."—Canby, Audio Engineering. Contains: Entry of the Gladiators, Anniversary Waltz, Toreador Song, Tennessee Waltz, Sidewalk of New York, Listen to the Mocking Bird and others.

### CIRCUS CALLIOPE MUSIC

Audio Fidelity No. LP 194, 10-inch, \$4.00. Vibrant sparkling and gay.

### HONKY TONK PIANO with EDDIE "PIANOLA" BARNES

Audio Fidelity No. 1827, 12-inch, \$5.95. The roaring twenties in brilliant Hi-Fi! Eddie at the 88s! Sharps and flats go flying as he plays old-time favorites such as "I Ain't Got Nobody," "My Sister Kate," "Little Nelly Kelly."

### MUSICAL GADGETS

Replica No. 1002, 12-inch, \$4.98. In this fabulous recording you can almost hear the saloon doors a-swinging as nine coin-operated musical devices of the past present an excitingly fresh sound experience! Musical history, and unsurpassed Hi-Fi!

### NICKELODEON AND CALLIOPE

Cook No. 10350, 12-inch, \$4.98. Contains all of what was the former 10-inch Cook recording, "The Great Barrelhouse Piano" and the "Calliope" side of the former 12-inch Cook record "Calliope and Carousel." The Nickelodeon side presents shotgun rhythms from the temperance era, played by the last authentic performer. Among them are "Wedding of the Painted Doll," "Button Up Your Overcoat," "Three Little Words" and "Sing Something Simple." The Calliope side contains "Entry of the Gladiators," "Anniversary Waltz," "Toreador Song" among others.

### SOUNDS OF THE CARNIVAL—The Midway; Merry-Go-Round Music

Folkways Record No. FPX-126, 12-inch, \$5.95. Here is a record that is ideal for scoring your movies or slides on the circus, carnival or amusement park. It has sounds of the crowds, the barkers, the rides and the music. And, besides, it's a most interesting item as a record alone.

## Beer Garden Music

### CAFE CONTINENTAL

Cook No. 10120, 12-inch, \$4.98. Contains: "INSIDE VIENNA—SCHRAMMEL MUSIC FROM THE HEURIGAN" which is a location recording, made in Vienna, of the music such as heard in hundreds of small garden restaurants—two violins, accordion and the zither-like contra-guitar. And: "ZITHER—CIBALOM"—the former played by Ruth Welcome, and including "September Song," "Greensleeves," "The River Seine" and others. The latter played by Dick Maria and including a traditional Czardas group, "Roumanian Rhapsody" and "Hungarian Rhapsody No. 8."

### Collectors' Items from the Theatre

### BURLESQUE UNCENSORED

Cook No. 1071, 12-inch, \$4.98. Recorded "in the flesh" during a live performance. "... for all who yearn for an occasional visit to New Jersey's cultural centers."—N. Y. Herald Tribune. "It is in truth a bare faced documentary of strip tease rhythms, baggy pants comedy, candy butcher and audience cat calls."—Reynolds, Chicago Tribune.

## Railroad Sounds

### BALTIMORE & OHIO

Railroad Record Club No. 4, 10-inch, \$5.25. Recorded at Painesville, Ohio, in June of 1956. Switcher No. 1634 (0-8-0) and Mallet No. 7609 (2-8-4).

## DENVER & RIO GRANDE WESTERN

Railroad Record Club No. 5, 10-inch, \$5.25. Recorded at Chama and Cumbres Pass, New Mexico, in July, 1956. Narrow gauge Mikados (2-8-2s) Nos. 484 and 486 were on head and rear of train, respectively, and sounds were recorded from the cupola of caboose No. 0571 coupled directly behind No. 486.



## C., ST. P., M. and O.—WABASH

Railroad Record Club, No. 1, 10-inch, \$5.25. Omaha Line No. 219 switching at Spooner, Wis. Did you ever ride a sleeper and stop at some division point in the wee hours of the morning and listen to a nearby switch engine doing yard work in a misting rain? This is just such a recording. On the other side: The last steamer on the Wabash, No. 576, doing yard work at Bluffs, Illinois. This recording was made from the train, and captures all the thrilling sounds of the air pump, clanging firebox door, exhausts and whistles.

## EAST BROAD TOP—D. & R. G. W. NARROW GAUGE FREIGHT

Railroad Record Club, No. 3, 10-inch, \$5.25. The now abandoned East Broad Top narrow gauge working the mountain range takes in one side... coal trains and switchers at Rockhill Furnace, a series of recordings of No. 15 at various points along the line from the terminal to Robertsdale, including a wonderful upgrade struggle near Kimmel. On the other side: D. & R. G. W. narrow gauge freight fighting uphill near Cumbres Pass. A 15-minute continuous recording of this passage with some of the sweetest "stack music" you'll ever hear.

## INTERURBAN LINES IN IOWA

Railroad Record Club, No. 2, 10-inch, \$5.25. On one side: Waterloo, Cedar Falls and Northern interurban No. 100 leaving the Y at Waterloo, stopping at the yard office and clattering southward. Made from the rear platform, you will hear the whine of the heavy traction motors, clatter of rail joints and the faint blast of the air horn up front. The opposite side: Old No. 9 of the Southern Iowa Railway. This interurban ceased running passenger service about 25 years ago, but this recording will whisk you back through memory lane as the motors whine, compressors churn, and the blast from the air whistle paves the way for clear crossings.

## 900-MILES (AND OTHER RAILROAD SONGS)

Folkways Record No. FP-13, 10-inch, \$4.25. Sung by Cisco Houston. Just the thing for the railroad fan, any collector of Americana or lover of folk songs.

## RAIL DYNAMICS

Cook No. 1270, 12-inch, \$4.98. "... beautiful and haunting sounds of a railroad reaching out over a wet, foggy night"—Players Magazine. "... so real it makes listeners duck."—N. Y. Times. A famous collection of railside sounds—made along the New York Central—with practically every type of locomotive represented.

## RAILROAD SOUNDS

Audio Fidelity No. ALPF-1843, 12-inch, \$5.95. The exciting sounds of a vanishing era—both steam and diesel—made in the New Orleans area, principally of Illinois Central locomotives and trains.

## 500 LINE—ILLINOIS CENTRAL

Railroad Record Club No. 33-100, 10-inch, \$4.00. Soo Line train, pulled by Pacific No. 2718, stopped for coal and water at Dresser, Wisconsin. This recording captures all of the thrill and excitement as this 4-6-2 starts with a heavy train of varnish on the grade, labors up the hill, slowly gathers speed and rumbles over the countryside with its shrill whistle clearing road crossings. The other side of the recording was made from a trackside location in the Illinois Central Yards at Centralia, Illinois. No. 3509, a little 0-8-0 switcher, busily puffs and chuffs while switching cars. The cling of the cars and the squeak of the brakes gripping little drivers paints a sound picture of a busy rail yard.

## SOUNDS OF STEAM LOCOMOTIVES, No. 1

Folkways No. FPX-6152, 12-inch, \$5.95. Here they are: Illinois Central 2-8-2 No. 1534; Burlington 2-8-2 No. 5352; Union Pacific 4-8-4 No. 801 and 4-12-2 No. 9007; Chicago and North Western 2-8-2 No. 2599; Burlington 4-6-4 No. 4003; Chicago and North Western 4-6-0 No. 1353; Union Pacific 4-8-4 No. 809 and 4-6-4 No. 3816; Burlington 4-8-4 No. 5629; Union Pacific 4-8-8-4 No. 4018; Illinois Central 4-8-2 No. 2514; Union Pacific 0-6-0 No. 4471; Denver and Rio Grande Western 2-8-2 No. 480; Union Pacific 4-6-6-2 No. 3839; Denver and Rio Grande Western narrow gauge 2-8-2s Nos. 495 and 493; Colorado and Southern 2-10-2 No. 809; Colorado and Southern 2-8-0 No. 648 and Union Pacific 4-8-4s Nos. 824 and 825.

## SOUNDS OF STEAM LOCOMOTIVES, No. 2

Folkways No. FX-6153, 12-inch, \$5.95. An all-Burlington disc containing: 0-6-0 No. 510; 2-8-2 No. 4958 leaving yards; No. 5116 climbing to elevator; No. 5112 spotting cars; No. 4958 returning to yard with empties; No. 5344 simmering on ready track; No. 5341 up to crossing and back; No. 5504 leaving yards with train; No. 5355 passing; No. 5505 switching at Ashland; No. 5504 on Woodlawn run; No. 5347 and helper 4-8-2 No. 7000 near Fifth; No. 5335 pulling into yards; No. 5504 running light to roundhouse and No. 5351 from roundhouse, simmering and switching.

## SOUNDS OF STEAM RAILROADING

U. Winston Link Production, 12-inch, \$4.95. Recorded along the Norfolk and Western, last of the steam railways, it includes nine sequences of sounds which range from the ghostlike workings of a train in the far Virginia hills to the call of an old-time depot announcer and the unbelievable pandemonium of a mighty mallet blasting past the microphone. Included are the lonely sounds of N. & W. chime and freight whistles, a passenger train arriving and leaving a way station and a hotshot freight shifting at a junction point.

## THE SILVERTON TRAIN

Railroad Record Club No. SP-1, 10-inch, \$5.25. A saga of the 476 from Durango to Silverton on the narrow gauge D. & R. G. W. Low slung drivers pounding slim gauge rail, laboring exhausts on steep grades, the haunting wail of a lonesome whistle!

## Sounds of Storm and Sea

## ECHOES OF THE STORM and CRAZY QUILT

Audiophile No. AP-20, 12-inch, \$5.95. No normal person would ever want this record! It's side "A" is the recording of a thunderstorm—and it's a lulu! Side "B" contains the sound of a rotary saw, the singing of a hammer head when nails are driven into hard wood, water dripping into an empty bucket, sound of various drums and cymbals. If you buy this, your wife will take you out to be psychoanalyzed!

## VOICE OF THE SEA

Cook No. RR5011, 12-inch, \$4.98. A collection of many sounds relating to the sea and those who travel upon it—one side composed of surf alone, the other containing departure of the Queen Mary, Navy Cruiser USS Columbus from the bridge and engine room, harbor sounds, etc. "... a hair-raising reproduction of the Queen Mary's whistle." ... High Fidelity Magazine. "Have your Mother Sills close at hand."—Saturday Review.

## CLOSE-OUT SALE

## 33 1/3-r.p.m. L. P. RECORDS

Here is a group of brand new, first quality 33 1/3-r.p.m. L. P. records that we have had in our record list this past year, but which we are dropping to make space for a number of new items in our "Music For Men" line. Only a few pressings of each of these items are available at these low prices, so order soon—and give us alternate titles whenever you can.

- CHA CHA CHA WITH PEDRO GARCIA AND HIS DEL PRADO ORCHESTRA (12-inch Audio Fidelity No. 1810), reg. \$5.95, close-out priced at only... \$4.44
- CHA CHA CHA WITH SALAMANCA AND HIS BAND (12-inch Audio Fidelity No. 1813), reg. \$5.95, close-out priced at only... \$4.44
- FOORT POPS WITH REGINALD FOORT AT THE WURLITZER (10-inch Cook No. 1057), reg. \$3.98, close-out priced at only... \$2.99
- GLOCKENSPIELS, TRAPS AND PLENTY OF PIPES, VOL. ONE with LEON BARRY AT THE ORGAN (12-inch Replica No. 33x501), reg. \$4.98, close-out priced at only... \$3.33
- THE GLORIOUS YEARS OF OPERA, 1900 (12-inch Audio Rarities No. LPA 2340), reg. \$5.95, close-out priced at only... \$4.44
- GOLDEN AGE OF THE THEATRE (12-inch Audio Rarities No. LPA 2465), reg. \$5.95, close-out priced at only... \$4.44
- LORD INVADER: CALYPSO (12-inch Audio Fidelity No. 1808), reg. \$5.95, close-out priced at only... \$4.44
- RAZZ-MA-TAZ IN HI FI (12-inch Hifirecord TM-D), reg. \$4.98, close-out priced at only... \$3.33
- RENDEZVOUS A PARIS with JOE BASILE AND HIS ACCORDION (12-inch Audio Fidelity No. 1821), reg. \$5.95, close-out priced at only... \$4.44
- A TRIBUTE TO GEORGE M. COHAN (12-inch Audio Rarities No. ALP 2295), reg. \$4.95, close-out priced at only... \$4.44
- CHRISTOPHER MOUSE (Two 12-inch LP records), close-out priced at only... \$4.99
- WHEN THE LITTLEST CAMEL KNELT (Two 12-inch LP records), close-out priced at only... \$4.99
- THE HOLY CHILD OF BETHLEHEM (Two 12-inch LP records), close-out priced at only... \$4.99
- GLOCKENSPIELS, TRAPS AND PLENTY OF PIPES, VOL. TWO with LEON BARRY AT THE ORGAN (12-inch Replica No. 33x503), reg. \$4.98, close-out priced at only... \$3.33
- MUSIC FOR MOOCHERS, GOLD DIGGERS AND CATTLE RUSTLERS (12-inch San Francisco TM-4), reg. \$4.98, close-out priced at only... \$3.33
- PERCUSSION AND PEDAL with REGINALD FOORT AT THE WURLITZER PIPE ORGAN (12-inch Cook No. 10523), reg. \$4.98, close-out priced at only... \$3.33

## USED 16mm. SILENT PRINTS

(Only one of each available—all in good condition!)

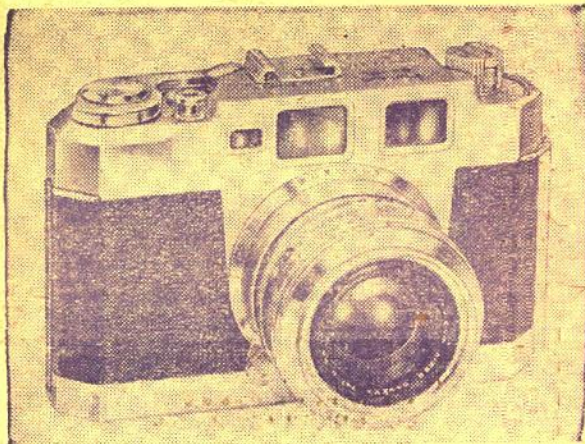
- 22749—ALLIES LIBERATE ROME (300-ft.)... \$4.98
- 22748—ALLIES STOP ROMMEL (300-ft.)... \$4.98
- 22749—BATTLE OF MIDWAY (300-ft.)... \$4.98
- 21958—BELLES OF THE SOUTH SEAS (300-ft.)... \$4.98
- 748—BRITISH ROYAL FAMILY IN AFRICA (300-ft.)... \$3.98
- 21997—EISENHOWER COMES HOME (300-ft.)... \$3.98
- 21997—GERMANY INVADES AUSTRIA (300-ft.)... \$4.98
- 22746—GERMANY SURRENDERS (300-ft.)... \$4.98
- 22748—GHOSTS OF THE GOLDEN WEST (300-ft.)... \$4.98
- 22746—INVASION OF SICILY (300-ft.)... \$4.98
- 22747—JAPAN SURRENDERS (300-ft.)... \$4.98
- 21793—KINGS OF THE ARCTIC (300-ft.)... \$4.98
- 21261—LIFE SAVING—FIRST AID (1500-ft.)... \$12.98
- 22746—MANILA LIBERATED (300-ft.)... \$4.98
- 22748—ON THE TRAIL (300-ft.), Dude Ranching... \$4.98
- 21034—RUSSIA (275-ft. in color)... \$9.98
- 21957—SPORTS AROUND THE WORLD (300-ft.)... \$3.98
- 21957—SPORT THRILLERS (300-ft.)... \$3.98
- 21031—THE STORY BOOK REVIEW OF MOTHER GOOSE (350-ft.)... \$4.98
- 21030—TRACK MEET THRILLS (300-ft.)... \$3.98
- 22746—TUNISIAN VICTORY (300-ft.)... \$4.98
- 21030—UNDERWATER CHAMPIONS (300-ft.)... \$4.98
- 22841—WATERFRONT SAFETY (350-ft.)... \$4.98
- 22749—WATER WONDERS (300-ft.), Grantland Rice Sportlight... \$4.98
- 22750—YANKS INVADE MARSHALL ISLANDS (350-ft.)... \$4.98
- 21997—YANKS RECAPTURE GUAM (300-ft.)... \$4.98
- 22750—YANKS SMASH TRUK (300-ft.)... \$4.98
- 21030—ZOO'S WHO (300-ft.)... \$4.98
- 22943—CAMERA THRILLS OF THE WAR (350-feet)... \$4.98
- 23533—COL. HEEZA LIAR PLAYS HAMLET (300-feet), Bray Cartoon... \$4.98
- 23461—CORONATION OF QUEEN ELIZABETH (300-feet)... \$3.98
- 17230—FOUR GUN BOSCO (400-feet). Old time slapstick comedy with Bud Duncan, print almost new, but on one side perforated stock... \$4.98
- 23533—MOVIE STARS ABOUT TOWN (400-feet). Around Hollywood... \$4.98
- 22943—BATTLE FOR TUNISIA (350-feet)... \$4.98
- 22943—SANTA CLAUS PUNCH AND JUDY (300-feet)... \$2.98
- 23284—WINTER SPORTS (300-feet)... \$3.98
- 23404—THE ELEMENTARY SCHOOL OF TOMORROW (400-feet in color). Gullhorn Film... \$5.98

- 22746—FAST AND FURIOUS (200-feet), Walt Disney Cartoon with Donald Duck... \$4.98
- 22747—THE FIREMAN (200-feet), Walt Disney Cartoon with Donald Duck... \$4.98
- 22747—THE FLYING TRAPEZE (200-feet), Walt Disney Cartoon with Donald Duck... \$4.98
- 22990—THE FOX HUNT (250-feet), Terrytoon Cartoon... \$3.98
- 22487—NIPP AND TUCK (650-feet), Mack Sennett Comedy with Billy Bevan, excellent used condition, but with short titles, and printed on one side perforated stock... \$5.98
- 22489—ONE MAMA MAN (750-feet), Hal Roach Comedy with Charlie Chase, Excellent used condition, but printed on one side perforated stock... \$7.98
- 22488—OVER THERE ABOUT (600-feet), Mack Sennett Comedy with Billy Bevan, Excellent used condition, but with short titles and on one side perforated stock... \$5.98
- 22488—RAINY KNIGHT (600-feet), Mack Sennett Comedy in excellent condition, but with short titles... \$5.98
- 22488—SHOULD SLEEP WALKERS MARRY? (600-feet), Mack Sennett Comedy with Billy Bevan, in excellent condition but with short titles... \$5.98
- 22943—SOMEWHERE IN EGYPT (250-feet), Gandy Goose Cartoon... \$3.98
- 22746—SUPER SERVICE (200-feet), Walt Disney Cartoon with Donald Duck... \$4.98
- 22487—WALL STREET BLUES (600-feet), Mack Sennett Comedy with Billy Bevan, excellent condition but with short titles... \$5.98
- 22487—WANDERING WILLIES (600-feet), Mack Sennett Comedy with Billy Bevan, excellent condition but with short titles and on one side perforated stock... \$5.98

## BLACKHAWK'S GUARANTEE

This guarantee provides that if for any reason you do not wish to retain any films or merchandise you order from Blackhawk, you may ship them back to us, transportation paid, within five days after you receive them, and we'll give you full credit less delivery postage. Of course, returned merchandise must be in substantially the same condition when returned as when you received it. If films are returned or sent for trade-in, it will usually be two to three weeks before exchange merchandise or refund check will reach you.

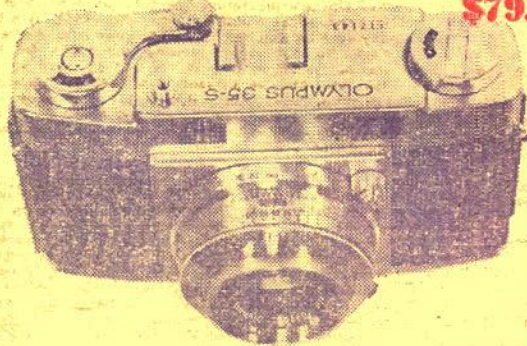




Here's the new Aires 35-III-L successor to the best-selling, best-performing Aires III. Has 11.5 mm. coated Cora 4.5 cm. 6 element lens, fully synchronized Seikoshia FMX shutter with shutter speeds of B, 1, 1/2, 1/5, 1/10, 1/25, 1/50, 1/100, 1/250 and 1/500 seconds; single-action lever to wind film and automatically cock shutter permits twelve pictures being taken in ten seconds; double exposure preventative device, automatic exposure counter with automatic "zero" setting and film rewind counter; coupled range-finder focusing from 20-inches (without auxiliary close-up lenses) to infinity; new LVS coupling of lens and shutter from 2 to 16; body release with special gears to prevent undue camera movement; trimming type combination range-viewfinder that enables the photographer to see the entire image even if he wears glasses.

Aires 35-III-L 35mm. Camera, complete with Leather Carrying Case, combined list price, \$112.00, our No. 10-01, only

**\$79.95**



Here is an excellent quality but moderately priced 35mm. camera with a fine f:2.8 lens, shutter speeds of B, 1, 1/2, 1/5, 1/10, 1/25, 1/50, 1/100, 1/250 and 1/500 second. Has coupled range finder, automatic film advance cocks shutter to prevent double-exposures.

Olympus 35-S 35mm. Camera complete with leather carrying case, combined list price, \$77.90, our No. 10-02, Blackhawk priced at

**\$59.95**

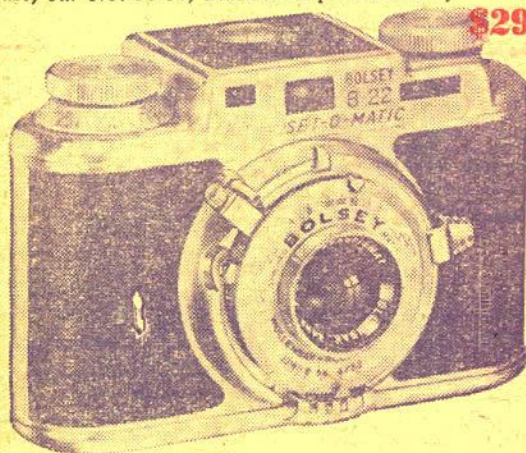
### SAMOCA 35 CAMERA WITH COUPLED RANGEFINDER

This Samoca 35mm. camera is usually found only on much more expensive cameras—coupled range-finder, f/3.5 C. Ezumar lens, double exposure prevention, automatic film transport and shutter winding, combined rangefinder and viewfinder, "F. X." flash synchronized shutter.



Samoca 35 Camera complete with carrying case, our No. 10-04, Blackhawk priced at only

**\$29.95**



### BOLSEY B-22 SET-O-MATIC (ILLUSTRATED) AND BOLSEY B-SPECIAL 35mm. CAMERAS WITH 1/1000 SECOND SHUTTER

Precision built in the U.S.A., these Bolsey 35mm. Cameras have all aluminum bodies, built-in rangefinder, 11.5 mm. coated Wollensak f:3.2/44mm. coated anastigmat lenses, shutter speeds T, B, 1/10 to 1/2000-second. Lens is mounted in helical focusing mount, with coupled, split-image rangefinder, optical eye-level viewfinder. The viewer has a wide range of field, gives greater depth of focus and focuses with range finder as close as two feet. Bolsey cameras take standard 35mm. cartridges of Anscochrome, Kodachrome or Ektachrome—or take 35mm. negative film. Has double-exposure prevention device. Compact design of camera makes possible one or two extra pictures to usual 20-exposure roll. Has internally flash-synchronized shutter.

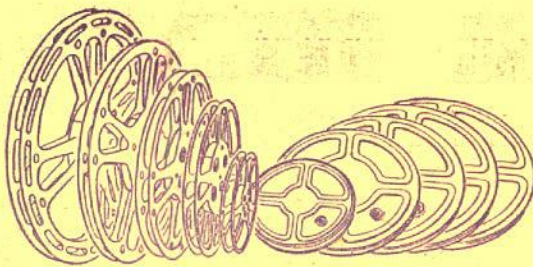
In addition, the Bolsey B-22 has flash "Set-O-Matic" that permits proper shutter setting for flash direct from range-finder focusing, X-synchronization at all speeds.

Bolsey B-22 "Set-O-Matic" 35mm. Camera (our No. 10-DC), with f:3.2 coated interchangeable lens, list \$69.50, Blackhawk priced at only

**\$29.95**

Bolsey B-Special 35mm. Camera (our No. 10-07), with f:3.2 coated interchangeable lens, list \$71.25, Blackhawk priced at only

**\$29.95**



### NEW REELS and CANS—16mm., 8mm. Made by one of the top manufacturers, these reels and cans are available from Blackhawk Films at the same price you have come to depend on here. The reels are stamped from a good grade of steel with sufficient spring to resist bending, yet are light in weight. Cans are embossed to achieve maximum rigidity. Reels and cans are of matching baked dull brown enamel finish.

2000-ft. capacity 16mm. reels (No. 51-08) or cans (No. 50-08):  
Each, \$4.49 3 for \$11.98 6 for \$21.98

1600-ft. capacity 16mm. reels (No. 51-07) or cans (No. 50-07):  
Each, \$2.49 3 for \$6.98 6 for \$12.98

1200-ft. capacity 16mm. reels (No. 51-06) or cans (No. 50-06):  
Each, \$2.29 3 for \$6.49 6 for \$11.98

800-ft. capacity 16mm. reels (No. 51-05) or cans (No. 50-05):  
Each, \$1.98 3 for \$5.49 6 for \$9.98

600-ft. capacity 16mm. reels (No. 51-04) or cans (No. 50-04):  
Each, \$1.79 3 for \$4.98 6 for \$8.98

400-ft. capacity 16mm. reels (No. 51-03) or cans (No. 50-03):  
Each, 79c 3 for \$1.98 6 for \$3.49

7-inch diameter 8mm. or magnetic tape reels (No. 51-02) or cans (No. 50-02):  
Each, 79c 3 for \$1.98 6 for \$3.49

5-inch diameter 8mm. or magnetic tape reels (No. 51-01) or cans (No. 50-01):  
Each, 69c 3 for \$1.79 6 for \$2.98



### KALIMAR A-1 and B-1 (illustrated) EXPOSURE METER

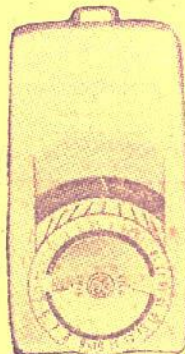
Highly sensitive meters with "f/16" scale measuring range for bright light conditions, and "low" scale for dull light. Has ASA, LVS, movie and Polaroid exposure numbering. In addition, B-1 meter (illustrated) has amazing 64-X booster that gives readings under the poorest light conditions. Both models come complete with leather cases and chain.

Kalimar A-1 Exposure Meter, list \$8.95, our No. 39-04, Blackhawk priced at only

**\$7.79**

Kalimar B-1 Exposure Meter (illustrated), list \$11.95, our No. 39-05, priced at only

**\$9.95**



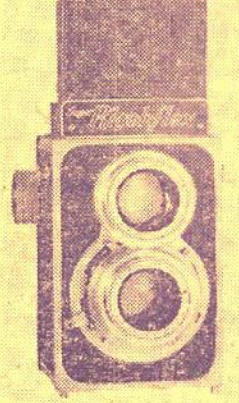
### MASCOT II EXPOSURE METER

Movie, still, stereo, color and black and white—just point and read exact lens setting for perfectly exposed pictures. Gives instant readings for both stills and movies, f stops from f:1.9 to f:32, exposure values (EV) from 5 to 18, shutter settings from one second to 1/1000th—plus the full range of conventional f.p.s. speeds for movie cameras. New smart color styling in beige and gold. Manufacturer's list price of combination of meter, leather carrying case and neck cord, \$11.34.

Mascot II Exposure Meter, complete with leather carrying case, our No. 39-01, Blackhawk priced at only

**\$9.95**

### SUPER RICOH FLEX 2 1/2" x 2 1/4" REFLEX CAMERA



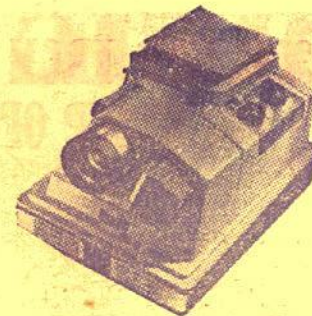
This 2 1/2 x 2 1/4 features matched 80mm. coated, color corrected f:3.5 anastigmat lenses, and rugged, accurate shutter with speeds of 1/10, 1/25, 1/50, 1/100, 1/200 and B. Converts to 35mm. with Color Back accessory. Brilliant, ground glass focusing with etched field of view for 35mm. close-up magnifier magnifies entire image, self-erecting hood opens at the touch of a latch. Synchronized for electronic flash at all speeds, and for SM and SF bulbs at speeds to 1/50. All metal body with satin chrome finish and leather grain trim. Built-in depth of focus scale. Film carrier removable for easy loading, uses standard 120 film or 35mm. with adapter. Gift packaged in hand-made box of kiln wood.

Super Ricohflex with case, our No. 10-03, only

**\$19.95**

Converts Ricohflex to a 35mm. camera. Quickly interchanges with regular film carrier. Gives 35mm. picture with 77% increase in image size. 35mm. field is etched on camera ground glass and autostop winding knob has dial for 35mm. film. Our No. 10-07.

**\$9.95**



### REVERE "888" FULLY AUTOMATIC 2" x 2" SLIDE PROJECTOR

The revolutionary, deluxe projector that is virtually a mechanical robot. Just set the switch, and the Revere "888" shows 36 slides as slow or as fast as you like—without touching a finger to it. Sit with your guests—walk around the room; the Revere "888" operates by itself. No dangling cords, no special slide mounts; no levers or buttons. Twenty outstanding features include: Powerful 500-watt lamp for ample illumination in home, classroom or auditorium; fast f:3.5 coated 5-inch anastigmat Wollensak lens with automatic fade-in and fade-out; special slot for projecting single frame views from any 3D slides; extremely quiet and efficient blower cooling system; exceptionally portable—overall size 13"x9"x9". Function knob permits you to time the slide change to slow, medium, fast, semi-automatic or manual operation. Built-in pointer permits operator to point to interesting details right from the projector to match commentary. Manufacturer's list price, \$144.50.

Revere "888" Fully Automatic 2"x2" Slide Projector, our No. 16-10, Blackhawk priced at only

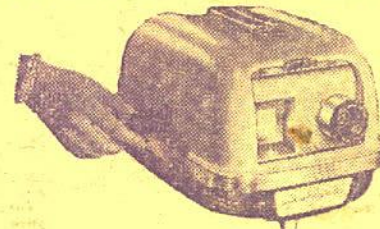
**\$109.95**

### REVERE "553" AUTO-MAGAZINE 2" x 2" SLIDE PROJECTOR

(Generally similar to Revere "888", illustrated above)  
A striking new 2"x2" slide projector with sensational "touch and show" case. Each touch of your finger automatically shows any of 36 slides in all type mounts mixed. Shows them in sequence, skip-selected or reprojected, as you wish. Returns them in ready-to-repeat order in the automagazine that serves, too, as a permanent file. No protruding magazine-adapters, nothing to assemble or attach. Just slide in the loaded magazine—and the show is on! Wollensak 5-inch, f:3.5 lens. Efficient blower-cooling system, and 300-watt projection lamp. Comes with compact, self-contained linen covered case and built-in viewing screen, and 7 Revere magazine trays with capacity of 252 slides. Manufacturer's list price, \$79.50.

Revere "553" Auto-Magazine 2"x2" Slide Projector, complete with carrying case and 7 Revere Slide Trays, our No. 16-09, Blackhawk priced at

**\$59.95**

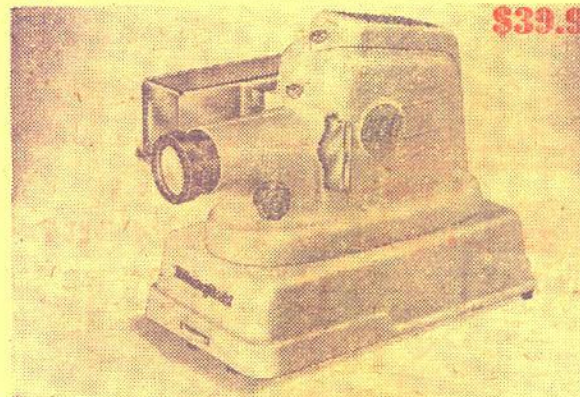


### QUICK-SET "SUPER 300" 2" x 2" SLIDE PROJECTOR

Quick-Set "300" is a new high quality photographic equipment, has put the finest craftsmanship and engineering know-how into this advanced, new slide projector. The "Super 300" has many exclusive technical advantages. Here are some of its major features: Ready for action instantly; self-enclosed, console cover; semi-automatic, built-in changer; Airequipt magazine for which it is designed holds 36 slides; uses new 300-watt horizontal-type lamp; 40% cooler than any other slide projector; projects super slides. Manufacturer's list price, \$69.95.

Quick-Set "Super 300" Semi-Automatic 2"x2" Slide Projector, our No. 16-11, Blackhawk priced at only

**\$39.95**



### NEW MANSFIELD "500" DeLUXE 2" x 2" SLIDE PROJECTOR

500-watt blower cooled, equipped with 5-inch f:3.5 coated achromatic lens, double condensing lens system, rack and pinion focusing knob, separate lamp and blower switches, 2-to-1 tilting device—all die-cast aluminum construction.

Mansfield "500" DeLuxe 2"x2" Slide Changer with Airequipt Automatic Slide Changer (illustrated), our No. 16-05, only

**\$33.95**

Mansfield "500" DeLuxe 2"x2" Slide Changer with Manual Changer, our No. 16-04, only

**\$33.95**

Here's an improved Mansfield 2"x2" slide projector with 300-watt lamp, 5-inch f:3.5 coated achromatic lens, double condensing lens system, rack and pinion focusing knob, 2-to-1 ratio tilting device, separate lamp and blower switches, all die-cast aluminum construction. Similar in general styling to Mansfield "500" DeLuxe illustrated above.

Mansfield Midway 300-Watt DeLuxe 2"x2" Slide Projector with Airequipt Automatic Slide Changer, our No. 16-03, only

**\$33.95**

Mansfield Midway 300-Watt DeLuxe 2"x2" Slide Projector with Manual Changer, our No. 16-02, only

**\$24.95**

Mansfield Carrying Case for any of the above "300" Models, our No. 16-07, only

**\$7.95**



## SAVE 30%, 40% FROM THE USUAL USED PRICES ON THIS BIG GROUP OF USED 16mm. SOUND FILMS!

This group of used 16mm. sound subjects—shorts and features—offers a new opportunity for Blackhawk's customers to save money. These prints are for the most part very good used copies—except that the main or end title, or a short amount of footage may be missing. In a scattering of cases, a print may be included because it has a few more splices than permitted for our usual used grouping. In a few instances, the same title may be listed under two different lengths. This does not mean that the shorter length shows is short a lot of footage. These are television prints, and the subject in question was edited into two or more different versions to fit different TV time spots. In ordering from this group, be sure to order by BOTH NUMBER AND TITLE.

21698—ANIMAL FAIR (200-ft.), Aesop's Fable Cartoon	\$ 4.98
22428—ANT LIE AS IT ISN'T (200-ft.), Aesop's Fable Cartoon	\$ 4.98
22414—CHILDREN OF THE WILD (2150-ft.), with Joan Valerie, James Bush, LeRoy Mason	\$22.98
22622—THE FROG (350-ft.), E. B. F. film selling new for \$60.00	\$12.98
18463—HOT ICE (400-ft.), Hockey	\$ 4.98
22912—IT HAPPENED TO CRUSOE (250-ft.), Cartoon	\$ 6.98
21018—JOHNNY LEARNS HIS MANNERS (700-ft.),	\$ 8.98
22588—JOLLY FISH (200-ft.), Dick and Larry Cartoon	\$ 5.98
21697—KOKO SMOKES (200-ft.), Cartoon	\$ 3.98
21288—MORNING PAPER (350-ft.), British Information Services	\$ 4.98
22414—MY OLD KENTUCKY HOME (2500-ft.) with Evelyn Venable, Grant Richards	\$27.98
21931—NARRAGANSETT (450-ft.) with Gadabout Gaddis	\$ 6.98
21684—NEW HORIZONS (600-ft. in color), Seaboard Air Line Railroad film showing scenic and industrial aspects of the South—and some good train shots—both steam and diesel	\$11.98
22545—ON THE DELAWARE AND HUDSON (300-ft.), Blackhawk Railroad Film. Almost new print, sound track dark	\$ 5.98
20510—OUR BILL OF RIGHTS (700-ft.), Dramatization of the historical background	\$17.98
22912—THE PLAYFUL PEST (200-ft.), Cartoon	\$ 6.98
22699—SLEEPING BEAUTY (250-ft.), Puppetoon	\$ 5.98
21288—STUDY OF STEEL (1600-ft.), British Information Services	\$ 9.98
22428—UNDERWATER ADVENTURE (250-ft.), Sport	\$ 6.98
21111—VACATION DAYS (2400-ft.) with Freddie Stewart, June Preisser	\$19.98
23070—ACE IN THE HOLE (250-feet), Woody Woodpecker Cartoon	\$ 7.98
22806—ALADDIN OF THE WONDERFUL LAMP (550-feet), Hal Roach's Little Rascals	\$18.88
21287—THE AMERICAN COP (650-feet), March of Time	\$ 8.88
22938—BAR 20 (1900-feet) with William Boyd as Hopalong Cassidy	\$22.22
23081—BASIC TYPING, METHODS (1000-feet)	\$ 6.98
22843—THE BEACH HUT (250-feet), Woody Woodpecker Cartoon	\$ 7.98
23014—BLUE GEESSE (350-feet), Hawley-Lord Sports Film	\$ 6.98
23400—THE BORDER PHANTOM (2100-feet) with Bob Steele	\$17.98
22845—CHAMPIONSHIP BASKETBALL (300-feet)	\$ 2.98
22844—CIRCUS AT THE ZOO (300-feet)	\$ 5.98
22843—CIRCUS SLICKER (300-feet), W. C. Fields Comedy	\$ 7.98
22845—CONSERVATION OF NATURAL RESOURCES (350-feet), Encyclopaedia Britannica Instructional Film selling new for \$60.00	\$12.98
21431—CORREGIDOR (2600-feet) with Otto Kruger and Elissa Landi	\$27.98
23012—CROW CRAZY (250-feet), Andy Panda Cartoon	\$ 6.98
22844—DANGER TRAIL (300-feet) with William Boyd as Hopalong Cassidy	\$ 6.98
22845—DIGESTION OF FOODS (350-feet), Encyclopaedia Britannica Instructional Film selling new for \$60.00	\$12.98
22843—THE DIPPY DIPLOMAT (250-feet), Woody Woodpecker Cartoon	\$ 7.98
23012—DIVING FUNDAMENTALS (300-feet in color), Official Sports Film	\$ 8.98
23049—DIZZY ACROBAT (250-feet), Woody Woodpecker Cartoon	\$ 7.98
23049—DOWN WITH CATS (250-feet), Mighty Mouse Cartoon	\$ 6.98
23081—DUTIES OF A SECRETARY (900-feet), Instructional Film	\$ 5.98
23049—ELIZA ON ICE (225-feet), Terrytoon	\$ 5.98
22844—FIRE! FIRE! (725-feet), Elip the Frog Cartoon	\$ 5.98
22846—FOODS AND NUTRITION (350-feet), Encyclopaedia Britannica Instructional Film selling new for \$60.00	\$12.98
23247—THE GOOSE FLIES HIGH (250-feet), Terrytoon	\$ 5.98
23050—THE GREAT CHASE (350-feet), W. C. Fields Comedy	\$ 7.98
23287—GRAY OWL'S LITTLE BROTHER (350-feet), the story of an Indian and his beaver friends	\$ 8.98
23012—THE HARE AND THE TORTOISE (300-feet), Encyclopaedia Britannica Instructional Film selling new for \$60.00	\$14.98
23013—HEREDITY (350-feet), Encyclopaedia Britannica Instructional Film selling new for \$60.00	\$12.98
23070—HIGH FLYERS (300-feet), Abbott and Costello Comedy	\$ 8.98
22843—THE HOUSE I LIVE IN (250-feet), a film on tolerance with Frank Sinatra	\$ 6.98
23013—THE HUNTING SEASON (250-feet), Merrytoon Cartoon	\$ 6.98
22846—HURRY, HURRY (300-feet), W. C. Fields Comedy	\$ 7.98
23092—JACK LONDON (2800-feet) with Michael O'Shea, Susan Hayward	\$28.98
23726—JEKYLL AND HYDE CAT (250-feet), Terrytoon	\$ 5.98
23092—JOHNNY DOESN'T LIVE HERE ANYMORE (2700-feet) with Simone Simon, Robert Mitchum	\$22.98
23012—KNOW YOUR FOOTBALL (300-feet)	\$ 2.98
23013—LET'S ALL SING TOGETHER No. One (300-feet), Community Sing	\$ 4.98
23355—LET'S GIVE A TEA (750-feet in color), Simmet-Meservey Instructional Film in color	\$18.98

## Blackhawk's BARGAIN BASEMENT

(Item 703). 16"x9 1/2"x11 1/2" black leatherette covered plywood carrying cases with opening for 10-inch speaker. Carrying handle. Like new. Transportation extra. Each \$3.49

(Item 712). 1000-watt, 115-volt, T-20 mogul prefocus base projection lamps for movie projector. New, but cartons are a little shopworn. These lamps fit many 35mm. movie projectors. List at \$7.90 each. Each, only \$2.98

(Item 750). New speaker cases for 12-inch speakers. Have hinged lids with clasps. Leatherette covered. Fit your own 12-inch speaker into these well designed cases—gray finish. Transportation extra. Each, \$9.98

(Item 59-DB). CBS Columbia Tape Recorder, Model 461, 7 1/2-IPS, half track. Used, but in excellent general condition. Transportation extra. Only \$49.95

(Item 1252). Neumade rack for 32 400-ft., 16mm. reels. An ideal control for a small library of 400-ft. films packed in cans, or on reels only. About three feet wide, sell new for \$11.25. Transportation extra. Price, per section \$4.99

(Item 1242). Argus C-3 35mm. camera for 2"x2" slides, f3.5 lens, complete with leather carrying case and flash gun. Excellent used condition. Only \$29.95

(Item 850). Brownie 300-watt, 8mm. projector complete with case. Has motor driven rewind. F.1.6 projection lens. Only \$39.95

(Item 1312). 50"x50" Radiant Meteor Tripod Screen. Like new except for small tear in screen margin—not on screen surface. Transportation extra. Only \$9.95

(Item 1313). Keystone K-400 Tape Recorder. Virtually new, but slightly shop worn. Records at both 7 1/2-IPS and 3 1/4-IPS, half track. Made by Magnecord. Original list price, \$204.95. Transportation extra. Only \$89.95

(Item 1322). Victor Change-over Switch. Permits starting motor of second projector while first projector is still running—turning on light of second projector at same moment light of first projector is cut off—then stopping motor of first projector after film trailer has run through. Good used condition. Only \$9.98

(Item 1488). 2"x2" color slide set, INDIA, LAND OF SONG AND STORY. 87 different slides. New. Sold originally for \$12.98, now \$7.77

(Item 1321). Brumberger Model 1503 8mm. Projector. Excellent used condition. Has 300-watt projection lamp. Only \$22.98

(Item 1316). Desk Top Rear Projection Screen. Permits projection from rear on top of desk. Screen area about 9"x12". Like new, only \$9.99

(Item 1310). Soundview Amplifier and Speaker. complete with Microphone, in portable carrying case. May be used as portable PA system, or as booster amplifier and second speaker for your 16mm. sound projector. Excellent condition, transportation extra. Only \$29.95

(Item 1309). Soundview Amplifier and Speaker, in portable carrying case—but without case lid. May be used as portable PA system, or as booster amplifier and second speaker for your 16mm. sound projector. Excellent general condition, transportation extra. Only \$16.95

(Item 906). Keystone E-946 16mm. silent projector. Operates from regular AC with 32-volt autolite lamp. Takes up to 400-ft. capacity reels. Transportation extra. Complete with carrying case \$29.95

(Item 878). Kodascope M-1 16mm. silent projector. Operates from AC only. Has 150-watt projection lamp, has variable voltage regulator, variable speed control. Transportation extra. Priced at only \$29.95

(Item 874). Victor 25AC 16mm. projector. Converted from 16mm. sound projector, with amplifier removed. Takes up to 1600-ft. film reels. Has 750-watt projection lamp. Self-contained in leatherette covered carrying case. Transportation extra. Only \$49.95

(Item 593). DeVry 35mm. Silent Projector, Model E. This is the famous DeVry "Suitcase" projector. Uses 500-watt projection lamp. Takes 1000-ft. capacity 35mm. reels. For use with safety film only. Transportation extra. A bargain at only \$39.95

(Item 1222). Astatic lapel microphone, for use with your movie projector amplifier, radio, record player or PA system. Carbon type. Good used condition. Only \$3.98

(Item 1305). Safe-lock Project-o-Stand. A portable and easily carried stand for your 16mm. sound projector. Good used condition. Transportation extra. Only \$9.95

(Item 1308). Zipper case for 60-inch wide tripod screen. New but shopworn. Only \$2.98

(Item 1311). Eicor Tape Recorder, Model 1000. Records at 7 1/2-IPS, half track. Mechanically in good condition. Only \$39.95

(Item 1304). Pair of Neumade 16mm. Clamp-type Rewinders, both ends geared. Brand new, first quality. May be easily attached and removed from table top. Take up to 2000-ft. capacity reels. Only \$12.95

(Item 1299). Davidson D-20 Elevator Tripod. Ideal for movie or still camera. Length 28-inches collapsed, 72-inches extended. Weighs 4-pounds, 12-ounces. Swing-tilt head. Non-squeak. Non-oil. List \$19.95. Only \$9.95

(Item 1297). Elgeet 6.5mm., 1.25 wide angle lens for 8mm. cameras. Coated elements. Standard "D" mounts. 3 1/2" thread. Like new, only \$9.95

(Item 1288). Box of fifty white 3 1/4"x4" Radio Mats—transparent type—writer slides—for mounting between glass and showing on stereopticon. Complete with binding tapes. Only \$1.69

## Close-out of 2"x2" RELIGIOUS SLIDES

We now have only a limited supply of the following diverse group of slides—mostly in color—on religious subjects. Almost all of these are the single frame type with a slightly smaller than standard transparency mounted in a standard 2"x2" ready mount. Most are new—a few are slightly used. These have been priced at up to \$6.98 per set, but to close them out, here are Blackhawk's wind-up prices . . .

Per set . . . \$2.69 Four sets . . . \$9.99

PROTESTANT SUBJECTS	
BY FAITH (40 slides, color)	
DEATH FOR FAITH (35 slides, color)	
DEFEAT IN VICTORY (43 slides, color)	
THE GLORIFICATION OF CHRIST JESUS (34 slides, color)	
HOLY BAPTISM (47 slides, black and white)	
THE KING COMETH (34 slides, color)	
LOST AND FOUND (34 slides, color)	
THE LOVE OF JESUS IN MIRACLE (27 slides, color)	
MIRIAM AND MOSES (26 slides, color)	
OPEN DOOR TO FAITH (41 slides, color)	
A PLEA FOR JUSTICE—AMOS (35 slides, color)	
PROTESTANT CHRISTIANITY TODAY (61 slides, color)	
SAINT PETER (34 slides, color)	
SIMON CALLED PETER (35 slides, color)	
THE STORY OF JOSHUA (35 slides, color)	
THE STORY OF MOSES—MOSES THE LIBERATOR (40 slides, color)	
THE STORY OF MOSES—MOSES THE LEADER, FROM THE RED SEA TO CANAAN (41 slides, color)	
THE STORY OF RUTH (35 slides, black and white)	
TROPHIES FOR THE KING (59 slides, color)	
THE TWO GREAT COMMANDMENTS (78 slides, black and white)	
WHEN THE LITTLEST CAMEL KNELT (44 slides, color)	
ALSO, THIS JEWISH SUBJECT	
JUDAISM TODAY (37 slides, color)	

## Blackhawk Films' SLIDE DUPLICATING SERVICE

Duplicates can be made from 35mm. or Bantam 2"x2" slides only. 35mm. copied to size, Bantam originals reduced to 35mm. Minimum order: \$5.00.

THE FOLLOWING PRICES ARE FOR DUPLICATE TRANSPARENCIES MOUNTED IN BLANK READY MOUNTS:

1 to 3 duplicates of a single original: 20c each
4 to 6 duplicates of a single original: 18c each
7 to 12 duplicates of a single original: 16c each
13 to 24 duplicates of a single original: 14c each
25 to 36 duplicates of a single original: 12c each
37 to 50 duplicates of a single original: 11c each
51 to 75 duplicates of a single original: 10c each
76 to 100 duplicates of a single original: 9c each
101 to 150 duplicates of a single original: 8c each
151 to 200 duplicates of a single original: 7c each
201 and more duplicates of a single original: 6c each

ADDITIONAL CHARGE FOR MOUNTING IN SPECIALLY PRINTED READY MOUNTS:

Copy for caption not to exceed 20 words.  
Minimum total number of slides to be imprinted in any one run, 1000.  
Minimum number of slides to be imprinted with single caption, 100.  
Imprinting charge, including type setting: \$20.00 for first 1000, then 2c per slide.

All originals must be identified as to color process—Kodachrome, Anscochrome, Ektachrome, Agfa Color, Ansco Color, Gevacolor, Ilford Color, etc., etc., to permit filtering for proper color balance in duplicates. Originals not identified as to color process will be reproduced without warranty on our part as to accuracy of color matching. No guarantee can be made for color quality of duplicates copied from over or under-exposed originals, faded or improperly processed originals, although often duplicates can be provided that are superior to such originals. Normal delivery time of duplicates to be mounted in blank ready mounts: Three weeks.

Send your slides, with remittance in full, to Slide Duplicating Department, Blackhawk Films, P. O. Box 598, Davenport, Iowa. Blackhawk Films will use every precaution to carefully handle and store your originals while in its possession, and to properly pack for return to you. However, the limit of its liability in case of loss, damage or destruction while in its possession, or on return to you, will be replacement with an equivalent length of unexposed camera film of the same or similar type, including processing and mounting.



These are brand new, first quality 2"x2" color slides—transparencies of the single frame area, about 1/4 narrower than the standard double frame—in standard 2"x2" ready mounts that project on any 2"x2" slide projector. Slides are printed in brilliant, three-color Americolor.

For every one of the following slide sets you buy at its regular price:

ALICE IN WONDERLAND (100 slides)	\$4.99
IVANHOE (113 slides)	\$2.99
ROBINSON CRUSOE (103 slides)	\$4.99
THE THREE MUSKETEERS (110 slides)	\$2.99

You may purchase a set of either of the following slide sets for only

1c

IVANHOE or THE THREE MUSKETEERS

Only one set may be purchased at 1c for each set purchased at regular prices—but you may buy as many combinations as you wish. Our stock of ALICE IN WONDERLAND and ROBINSON CRUSOE is quite limited.



## A FINE GROUP OF 16mm. SOUND INSTRUCTIONAL FILMS

From leading producers such as Encyclopaedia Britannica, Coronet, Young America, McGraw-Hill, Simmel-Meservey and the University of California—at savings of up to 80% from current new prices. As an example, most new films of 350 to 400-feet released by Encyclopaedia Britannica and Coronet today sell at between \$55.00 and \$60.00 for new black and white prints—double this for prints in color. But at Blackhawk, these prints in black and white—all in good used condition—may be purchased at \$24.95, \$19.95, \$14.95 and \$9.95.

While all schools and educational institutions are fully informed as to the content of all of these films, and have full catalog descriptions readily available, if you're an individual not having this information, and possibly interested in purchasing a certain title, we'll be glad to provide descriptive information for you. Of course, the best way to do is to order the subject and see for yourself its contents and condition—for Blackhawk's guarantee gives you five days after you receive it to make up your mind. If you don't wish to keep it, you may return it during that period in the condition in which it was received by you, and we'll apply your credit on another purchase, give you a credit memo which you may use later, or refund your remittance.

### SOCIAL STUDIES—Aviation and World Geography

THE DEVELOPMENT OF TRANSPORTATION (10 m., EBF) \$ 9.95  
AIRPLANE CHANGES OUR WORLD MAP (10 m., EBF) \$19.95

### SOCIAL STUDIES—People

JAPANESE FAMILY (21 m., Julian Bryan/McGraw-Hill) \$49.95  
PEOPLE OF WESTERN CHINA (10 m., EBF) \$19.95

### SOCIAL STUDIES—Places

THE ANDES (Color) (10 m., Hollywood Films) \$29.95  
JOURNEY TO PROVENCE (Color) (11 m., Instructional Films/Simmel-Meservey) \$29.95  
THE MIDDLE STATES (10 m., EBF) \$ 9.95  
NATURAL RESOURCES OF THE PACIFIC COAST (10 m., Coronet) \$24.95  
THE SOUTHEASTERN STATES (10 m., EBF) \$ 9.95  
SOUTHERN CHILE (Color) (10 m., Hollywood Film) \$24.95  
THE UNITED STATES (40 m., B. I. S.) \$39.95

### SOCIAL STUDIES—Occupations

THE FARMER (Color) (14 m., EBF) \$49.95  
IRRIGATION FARMING (10 m., EBF) \$ 9.95  
THE MACHINE MAKER (10 m., EBF) \$14.95

### SOCIAL STUDIES—Industries

CHILE'S COPPER (10 m., Hollywood Film) \$14.95  
PAPER FORESTS (10 m., Flory) \$19.95  
THE STORY OF STEEL (10 m., Knowledge Builders) \$ 9.95

### SOCIAL STUDIES—Economics

CONSUMER PROTECTION (10 m., Coronet) \$19.95  
DISTRIBUTING AMERICA'S GOODS (10 m., EBF) \$ 9.95  
PRODUCTION OF FOODS (10 m., EBF) \$19.95  
USING THE BANK (10 m., EBF) \$14.95

### SOCIAL STUDIES—History

COLONIAL WILLIAMSBURG (10 m., Nu-Art) \$ 9.95  
DISCOVERY AND EXPLORATION (10 m., EBF) \$19.95  
THE GREAT TRAIL (12 m., Sterling) \$12.95  
IMMIGRATION (10 m., EBF) \$14.95  
LIFE IN OLD LOUISIANA (10 m., EBF) \$24.95  
OUR BILL OF RIGHTS (20 m., Academic) \$24.95  
OUR NATIONAL GOVERNMENT (10 m., Knowledge Builders) \$14.95  
REMEMBER THE ALAMO (45 m., Eastin) \$29.95  
STORY OF OUR FLAG (10 m., Knowledge Builders) \$ 9.95  
UNITED STATES (40 m., B. I. S.) \$39.95  
WESTWARD MOVEMENT (10 m., EBF) \$19.95

### SOCIAL STUDIES—Civics

COUNTY GOVERNMENT (25 m., U. S. Information Service) \$24.95  
DOES IT MATTER WHAT YOU THINK? (15 m., B.I.S.) \$19.95  
DESPOTISM (10 m., EBF) \$24.95  
GROWTH OF CITIES (10 m., EBF) \$ 9.95  
HOW WE ELECT OUR REPRESENTATIVES (10 m., Coronet) \$19.95  
PROBLEMS OF HOUSING (10 m., EBF) \$ 9.95  
PUBLIC OPINION (10 m., EBF) \$19.95  
WE THE PEOPLE (10 m., Young America) \$ 9.95

### SOCIAL STUDIES—Tolerance

BROTHERHOOD OF MAN (10 m., Color) \$39.95  
THE CHALLENGE (30 m., McGraw-Hill) \$19.95  
THE HOUSE I LIVE IN (10 m., Young America) \$ 9.95

### SOCIAL STUDIES—Conservation

CONSERVATION OF NATURAL RESOURCES (10 m., EBF) \$24.95  
RIVER SYSTEMS AND MAN (15 m., Sterling) \$ 9.95

### SOCIAL STUDIES—Human Relationships

THE BABY SITTER (15 m., Young America) \$29.95  
THE FEELING OF HOSTILITY (27 m., McGraw-Hill) \$29.95  
FRIENDSHIP BEGINS AT HOME (16 m., Coronet) \$14.95  
HOW HONEST ARE YOU? (13 m., Coronet) \$29.95  
WOODY GROWS UP (Color) (10 m., Simmel-Meservey) \$24.95

### STUDY SKILLS

MAKING THE MOST OF SCHOOL (10 m., Coronet) \$19.95  
HOW TO STUDY (10 m., Coronet) \$24.95

### HEALTH

CARE OF THE FEET (10 m., EBF) \$24.95  
DEFENDING A CITY'S HEALTH (10 m., EBF) \$19.95  
FUNDAMENTALS OF DIET (10 m., EBF) \$19.95  
HEART AND CIRCULATION (10 m., EBF) \$24.95  
HOW WE HEAR (10 m., Knowledge Builders) \$14.95

### HEALTH—Physical Education

THE AMERICAN SQUARE DANCE (10 m., Coronet) \$19.95  
DIVING FUNDAMENTALS (10 m., Vis. Educ. Pict.) \$ 7.95  
DIVING FUNDAMENTALS (Color) (10 m., Vis. Educ. Pict.) \$14.95  
PROPER STEPS (10 m., Flory) \$ 9.95  
SWIMMING FOR BEGINNERS (Color) (10 m., Vis. Educ. Pict.) \$14.95

### LITERATURE

FRANCE: BACKGROUND AND LITERATURE (10 m., Coronet) \$14.95  
THE LADY OF THE LAKE: BACKGROUND FOR LITERATURE (10 m., Coronet) \$19.95  
MACBETH (16 m., Eastin School Film) \$ 9.95  
MEMORIES OF SHAKESPEARE (35 m.) \$29.95  
SHAKESPEARE'S ENGLAND TODAY (Color) (16 m., Eastin) \$39.95

### MUSIC

INSTRUMENTS OF THE ORCHESTRA (20 m., Eastin) \$19.95  
THE PERCUSSION GROUP (10 m., EBF) \$ 9.95  
SOUNDS OF MUSIC (10 m., Coronet) \$19.95  
THE STRING CHOIR (10 m., EBF) \$ 9.95  
THE STRINGS (10 m., Teaching Films) \$ 9.95

### ART

MODERN LITHOGRAPHER (10 m., EBF) \$14.95  
PLASTIC ART (10 m., EBF) \$19.95  
PARIS, CITY OF ART (11 m., EBF/Simmel-Meservey) \$ 9.95

### LANGUAGE ARTS

DESCRIBING AN INCIDENT (10 m., Coronet) \$19.95  
SPEEDING YOUR READING (10 m.) \$14.95

### SCIENCE—General Sciences

COLLOIDS (10 m., EBF) \$24.95  
ELECTRODYNAMICS (10 m., EBF) \$19.95  
ELECTRONS (10 m., EBF) \$19.95  
ENERGY AND ITS TRANSFORMATIONS (10 m., EBF) \$24.95  
GEOLOGICAL WORK OF ICE (10 m., EBF) \$14.95  
INTRODUCTION TO CHEMISTRY (10 m., Coronet) \$19.95  
LET'S SEE (Color) (15 m., British Council Film) \$24.95  
LIGHT WAVES AND THEIR USES (10 m., EBF) \$19.95  
MEASUREMENT OF ELECTRICITY (10 m., Coronet) \$19.95  
NO VACANCY (Color) (5 m., Holst) \$14.95  
REACTIONS IN PLANTS AND ANIMALS (10 m., EBF) \$19.95  
SENDING RADIO MESSAGES (10 m., EBF) \$14.95  
SERIE AND PARALLEL CIRCUITS (10 m., EBF) \$19.95  
STORY OF ELECTRICITY (10 m., Knowledge Builders) \$ 9.95  
THERMODYNAMICS (10 m., EBF) \$14.95  
VACUUM TUBES (10 m., EBF) \$19.95  
WORK OF THE ATMOSPHERE (10 m., EBF) \$14.95

### SCIENCE—Biology

BUTTERFLIES (10 m., EBF) \$19.95  
THE FUR SEAL (10 m., Young America) \$14.95  
GRAY SQUIRREL (10 m., EBF) \$24.95  
HEREDITY (10 m., EBF) \$24.95  
HOUSE-FLY (10 m., EBF) \$ 9.95  
MOTHS (10 m., EBF) \$24.95  
MONARCH BUTTERFLY (Color) (10 m., Simmel-Meservey) \$49.95  
THE OTTER (10 m., DeVry) \$ 9.95  
THE PIPEVINE SWALLOWTAIL BUTTERFLY (Color) (20 m., Simmel-Meservey) \$29.95  
SEASHORE WONDERLAND (Color) (10 m.) \$29.95

### DRAMATICS

MAKE-UP FOR THE THEATRE (Color) (15 m., Univ. of Calif.) \$39.95  
ONE WAY TO BUILD A FLAT (15 m., Univ. of Calif.) \$24.95

### FOREIGN LANGUAGES—French

AU RESTAURANT (10 m., Focus Films) \$24.95

### VOCATIONAL TRAINING—Home Economics

HOME COOKERY OF FISH (10 m., EBF) \$ 9.95  
LET'S GIVE A TEA (Color) (22 m., Simmel-Meservey) \$29.95  
PRESERVING FOODS (10 m., Coronet) \$14.95  
PRINCIPLES OF BAKING (10 m., EBF) \$ 9.95  
PRINCIPLES OF HOME CANNING (10 m., EBF) \$19.95

### VOCATIONAL TRAINING—Business Training

BOOKKEEPING AND YOU (10 m., Coronet) \$19.95

### VOCATIONAL TRAINING—Teacher Training

LEARNING TO UNDERSTAND CHILDREN, Part One, A DIAGNOSTIC APPROACH (21 m., McGraw-Hill) \$29.95

### ELEMENTARY—Health and Safety

SAFETY BEGINS AT HOME (10 m., Young America) \$ 9.95  
SAFETY TO AND FROM SCHOOL (10 m., Young America) \$19.95

### ELEMENTARY—Reading Background

DAY AT THE FAIR (10 m., EBF) \$24.95  
THREE FOX FABLES (10 m., EBF) \$24.95

### ELEMENTARY—Science

CARE OF PETS (10 m., EBF) \$24.95

### SOCIAL STUDIES—Business and Economics (Elementary)

THE MAIL (10 m., Donavin Miller Prod.) \$ 9.95

### SOCIAL STUDIES—People (Elementary)

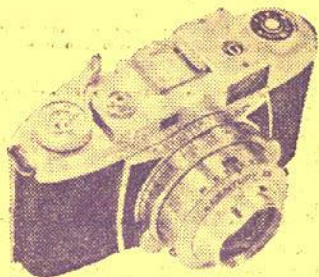
NAVAJO CHILDREN (10 m., EBF) \$24.95

### SOCIAL STUDIES—Occupations (Elementary)

BUS DRIVER (10 m., EBF) \$24.95  
THE DOCTOR (10 m., EBF) \$19.95  
THE FIREMAN (10 m., EBF) \$14.95  
FOOD STORE (10 m., EBF) \$24.95  
POLICEMAN (10 m., EBF) \$24.95

### SOCIAL STUDIES—Nature Study (Elementary)

BLACK BEAR TWINS (10 m., EBF) \$24.95  
HARE AND THE TORTOISE (10 m., EBF) \$24.95  
LIVE TEDDY BEARS (THE KOALA) (10 m., EBF) \$24.95  
RIKKE—THE BABY MONKEY (10 m., EBF) \$24.95



## GRAFLEX-MADE CENTURY 35 CAMERAS

The Century 35 is American-made by Graflex. This new camera has combination viewfinder and rangefinder which allows you to compose and focus simultaneously. Depth of field scale indicates at a glance depth of field at any distance setting. Full range of shutter speeds with the Seikoshia MX shutter—1 sec. to 1/500 second plus B. Full synchronization range "X", "P" and "M" at all speeds—M-2 lamps up to 1/50th. Exposure counter dial indicates remaining exposures.

Century 35 Camera complete with fully color corrected, coated 45mm. Prominar F:3.5 lens and carrying case, list \$57.00, our No. 10-09, only **\$44.95**

Century 35 Camera complete with fully color corrected, coated 48mm. Prominar F:2.8 lens and carrying case, list \$72.00, our No. 10-09, only **\$59.95**

### BLACKHAWK SINGLE FRAME AND DOUBLE FRAME

## 2"x2" SLIDE READY MOUNTS

These are unprinted cardboard ready mounts for you to use in mounting your double frame (regular 8-perforation, 35mm.) transparencies, or single frame (4-perforation, 35mm., such as frame from regular filmstrip). The single frame can also be used for mounting single transparencies shot on a stereo camera, although they do crop slightly along the sides. These ready mounts are embossed to hold the transparencies in position, and plastic coated on the inside panels. To seal, all you need do is to go around edge of mount with medium heat iron—do not iron over transparency.

Blackhawk Single Frame Ready Mounts for 2"x2" slides, unprinted, our No. 15-06, box of 100 **\$1.49**

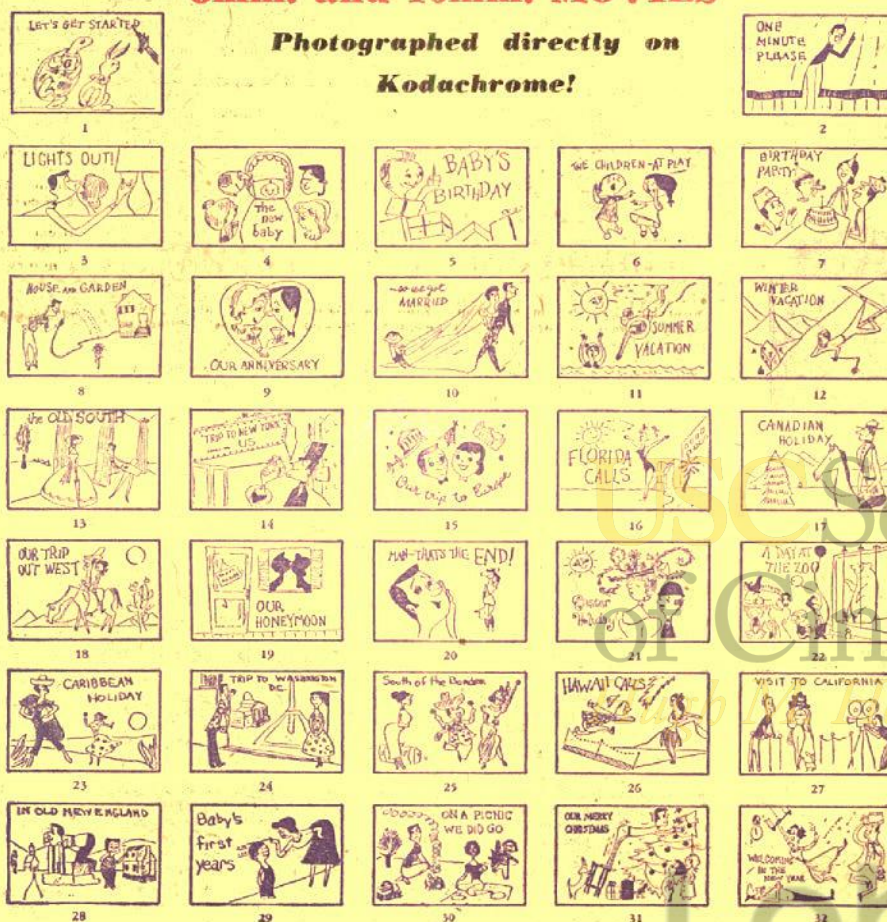
Blackhawk Double Frame Ready Mounts for 2"x2" slides, unprinted, our No. 15-07, box of 100 **\$1.49**

## COLOR TITLE STRIPS

for your

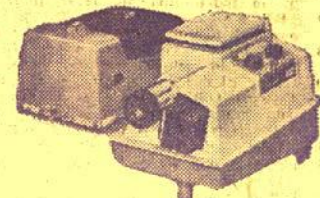
## 8mm. and 16mm. MOVIES

Photographed directly on  
Kodachrome!



8mm. Color Title Strips, photographed directly on Kodachrome, order individually by number, each **69c**

16mm. Color Title Strips, photographed directly on Kodachrome, order individually by number, each **79c**



## REVERE 500-WATT "505" AND 300-WATT "503" 2"x2" AUTO-MAGAZINE SLIDE PROJECTORS

The auto-magazine 35mm. slide projectors that give an unmatched combination of simplest operation . . . smoothest performance . . . and extremely low cost. Each touch of the finger automatically shows any of 36 slides (including Super Slides when No. 3 condenser is replaced with accessory L-140 condenser lens) . . . all types, all mounts—mixed. No protruding magazine adapters; nothing to assemble or attach. Just slip off the handsome two-toned "Royalite" plastic slip-over case, insert magazine and you're set to show! Has fast F:3.5 color corrected 5-inch coated anastigmat lens, tilt and level control, built-in pointer.

Revere "505" 2"x2" Slide Projector, 500-watt lamp, complete with case, manufacturer's list, \$69.50, our No. 16-14, Blackhawk priced at only **\$57.95**

Revere "503" 2"x2" Slide Projector, 300-watt lamp, complete with case, manufacturer's list, \$59.50, our No. 16-15, Blackhawk priced at only **\$47.95**



## KALIGAR F:1.9 TELEPHOTO AND WIDE ANGLE 8mm. D-MOUNT LENS SETS

This Japanese-made Kaligar TW19C Lens Set consists of a 1 1/2-inch F:1.9 focusing lens and a 6.5mm. F:1.9 semi-focusing lens (infinity) covering sharp focus from 7-feet to most distant object. "Close" covering sharp focus for objects from 3-feet to 7-feet from camera). complete with leather carrying case to accommodate both lenses. D-Mounts fit most 8mm. cameras. Importer's list price, \$69.90.

Kaligar F:1.9 Telephoto and Wide Angle 8mm. Lens Sets, our No. 24-09, only **\$39.95**

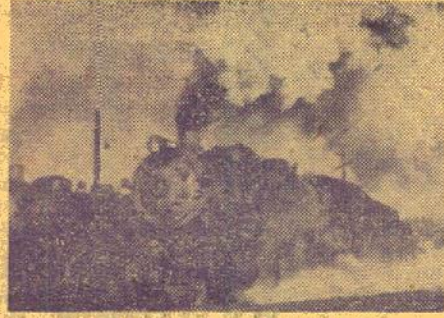




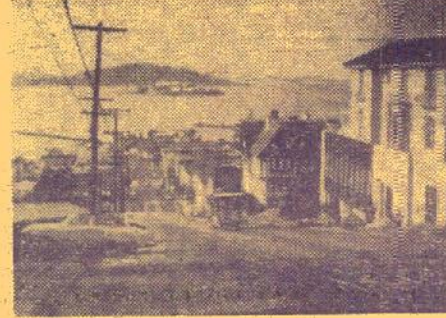
"TRAIL RIDGE ROAD, ROCKY MOUNTAIN NATIONAL PARK"



"THE SPANISH-AMERICAN WAR ON LAND AND SEA"



"BALTIMORE & OHIO 2-8-2 AT NORTH VERNON, INDIANA"



"SIGHTSEEING IN SAN FRANCISCO"

# BLACKHAWK'S 2" X 2" COLOR SLIDE SETS

(A FEW SLIDES IN THE RAILROAD SERIES ARE BLACK & WHITE AND ARE SO MARKED)

## TRAVEL SLIDES

### North America

#### No. 66—ANIMALS OF YELLOWSTONE NATIONAL PARK (30 slides).....\$4.49

Here is what we feel to be a superlative set of color slides on birds and animals of Yellowstone National Park, photographed by David del. Condon, who has the year-round opportunity to get at remote spots in the Park seldom visited by the average tourist. You'll see elk, grouse, gulls, pelicans, beaver, coyote, black bear, grizzly bear, snowshoe rabbits, bison, mule deer, antelope, bighorn sheep, moose, Canada Jays and a great gray owl. There are shots made in all seasons of the year—and we know you'll be HIGHLY pleased with the assortment—a fine group to tie in with your own slides of the Park.

#### No. 62—ARCHES NATIONAL MONUMENT (12 slides).....\$1.89

A relatively new National Monument, Arches is in the same general area of southern Utah as are Zion and Bryce National Parks. Arches is an area having a great many natural bridges and grotesque rock formations, in much the same warm colorings as the rocks in Zion and Bryce. It is a particularly good supplementary set for showing with the slides of Bryce and Zion Canyons.

#### No. 95—ARCHES NATIONAL MONUMENT (8 slides).....\$1.49

This is the former Wild Life Slide set containing eight superlative 2"x2" color slides on this relatively new National Monument. Contains: Colorado River from Dead Horse Point, Parade of the Elephants, Turret Arch, Landscape Arch, Devil's Garden, Fishers Tower with Indian Camp, South Window and Delicate Arch.

#### No. 67—AUTUMN AND WINTER IN YELLOWSTONE NATIONAL PARK (12 slides).....\$1.89

Here are scenes practically never seen by a tourist, scenes that can be caught only by someone who has the opportunity to be in many sections of the Park at all seasons of the year. In this set, David del. Condon has caught the bright yellow aspens on a mountain side in the fall. Yellowstone Lake bordered with wooded shores spotted with color, but most unusual of all, waterfalls that are ribbons of ice in winter, hot springs areas bordered by snow, and a snow-covered landscape tinged rose from a winter sunset.

#### No. 19—AUTUMN IN WYOMING (12 slides).....\$1.89

The autumn colors on the birch and aspen in the Big Horn Mountains around Sheridan; in the Jackson Hole Country and the Wind River Country. An outstanding supplementary set—and a beauty just to look at!

#### No. 134—AUTUMN IN YOSEMITE (17 slides).....\$2.49

Grizzly Giant in Mariposa Grove, Wawona Tunnel, the giant sequoias and the tunnel tree, Sierra Crest, from Washburn Point, Half Dome from Glacier Point, Half Dome and Tenaya Canyon from Glacier Point, Yosemite Valley from Glacier Point, preparing the fire fall, the fire fall at night, covered bridge, Tenaya Lake, Jeffrey pine on Sentinel Dome, Tuolumne Meadows, Lambert Dome and Tioga Pass Road.

#### No. 96—BANFF NATIONAL PARK (8 slides).....\$1.49

A former Wild Life slide set made up of eight excellent 2"x2" color slides on this outstanding Canadian scenic attraction. Contains: Lake Louise in both summer and winter, Bow River Falls, Mount Rundle, The Hoodoos, Bow River Valley in the fall, Moraine Lake and Ten Peaks, Mount Eisenhower.

#### No. 31—THE BLUE GRASS STATE, KENTUCKY (18 slides).....\$2.49

Up and down the beautiful Blue Grass State. There are a few shots of Louisville, Frankfort, Lexington and Covington—a few historical highlights—but the set basically deals with Kentucky's blue grass country, white fenced farms, and horses. One of the last color photographs of the famous Man-o-War is included.

#### No. 135—BRIGHT LIGHTS OF BROADWAY (26 slides).....\$3.98

Here's as flashy a colored slide set as you can imagine. From Times Square to Columbus Circle along Broadway, photographed mostly between 10:00 P. M. and 2:00 A. M. You see Broadway from atop the Times Building, the world's most animated electric signs at Times Square, theatre marquees, penny arcades, theatre crowds, night clubs and restaurants. Here is an assortment of slides that every visitor to New York would like to have taken—but for which time and opportunity probably would not be available. But New York visitor or not, it's a set that will bring exclamations of delight from any group for which you show it!

#### No. 61—BRYCE CANYON NATIONAL PARK (16 slides).....\$2.49

Situated next door to Zion National Park in southern Utah, Bryce Canyon has much of Zion's warm colorings, but in addition has some remarkable formations resulting from erosion—pinacles, parapets, castles, towers and many other unusual formations. This slide set is a most effective presentation of the Park's scenic attractions.

#### No. 57—THE CABLE CARS OF SAN FRANCISCO (20 slides).....\$2.98

Here is a new set, just produced, showing the present-day operation of the famed cable cars of San Francisco in high fidelity color, and in great detail. Both the Powell and California lines are shown, together with interior shots of the power houses, where the cables are driven, and the car barns. Photographed by James Morley.

#### No. 97—DEATH VALLEY (8 slides).....\$1.49

Another former Wild Life 2"x2" color slide set of extraordinary beauty. Contains: 20 Mule Team in Desolation Canyon, Winter in the Panamints, Ubechee Crater, The Sand Dunes, Salt Pool—Devil's Golf Course, Death Valley from Dante's View, Painter's Palette, and Manley Beacon.

#### No. 14—FABULOUS FLORIDA (50 slides).....\$6.98

America's sub-tropical vacationland! Jacksonville, St. Augustine, Tampa, Palm Beach, Miami, Miami Beach and Key West! Musa Isle, Cypress Gardens, Marineland and Silver Springs! Some spectacular shots of a spectacular state!

#### No. 68—GEYSERS AND HOT SPRINGS OF YELLOWSTONE (30 slides).....\$4.49

As any tourist who has visited Yellowstone knows, timing a tour to see most of the more famous geysers performing is a practical impossibility. Only someone who covers the Park the year-round, and knows when to be where, can deliver the pictures. This is what David del. Condon has done with these views of Yellowstone's geysers and hot springs. You'll see some geysers that erupt only once in every few weeks, or as infrequently as four or five times a year. And you see them in summer and winter, and at unusual times of the day that make for some very novel photographic effects. And Yellowstone's colorful pools, hot springs and terraces are also shown to very good effect.

#### No. 32—THE GRAND CANYON (32 slides).....\$4.49

The tremendous expanses of the Grand Canyon, with its vivid colorings, are shown from many of the principal vantage points. We go along with a trail party to Phantom Ranch. We see the Indian Pueblos and Desert Watchtower. We see the subtle changes in the coloring of the canyon from different points and at different times of the day.

#### No. 58—GRAND CANYON TRAILS (24 slides).....\$3.69

The average tourist could never photograph slides like those in this set. Certainly the average tourist could not match their photographic excellence—but most of all the average tourist would never be able to spend the time necessary to cover the spectacular descents and ascents on Bright Angel and Kaibab Trails—or the distant and out-of-the-way spots to which these trails lead. (This set is supplementary to set No. 32, "The Grand Canyon".)

#### No. 5—NEIGHBOR MEXICO (51 slides).....\$6.98

Mexico, being so near to us geographically, is naturally one of the most extensively toured of all foreign countries as far as Americans are concerned. And, its culture and customs being so different from our own, only heightens our interest. The first half is devoted to such cities and towns as Mexico City, Monterey, Tuxtepec, Acapulco, Guadalajara and other spots on and off the tourist path and including several spectacular shots at Xochimilco. The second half covers native crafts such as leather working, weaving, glass, pottery, painting, native life and particularly a group of slides of the Mayan ruins of Yucatan.

#### No. 111—NEW ENGLAND AUTUMN (13 slides).....\$1.98

Autumn and New England are a magic combination when it comes to color, and this short but brilliant slide set is a dazzling example of what New England holds in the fall of the year—highways and byways, clear streams, still ponds, typical New England farm home against flaming backgrounds of autumn foliage.

#### No. 15—THE PACIFIC NORTHWEST (35 slides).....\$4.98

One of the most beautiful regions in the U. S. A. is our Pacific Northwest, made up principally by the states of Washington and Oregon. This slide set not only shows us such scenic attractions as Mount Rainier, Mount Hood and Crater Lake, but the Columbia River, Grand Conlee and Bonneville, the gigantic lumbering operations, flowers, fruits and fields of grain, rugged coast and swift mountain streams.

#### No. 43—THE PANAMA CANAL (19 slides).....\$2.98

The administration buildings, the Trans-Isthmian Highway, Colon, Gatun Locks (from the inside), Gatun Lake, Gaillard Cut, Miraflores Locks, abandoned French machinery, Balboa Pier and Balboa Yacht Basin.

#### No. 59—PEAKS, PARKS AND PASSES IN COLORADO (24 slides).....\$3.69

Another most unusual set, made in the two-mile-high mountain country of Colorado by Robert LeMassena. Shots at all seasons—spring, summer, fall and winter—largely off the beaten track and under conditions that would be difficult for the casual photographer. Loveland Pass deep in the winter's snows—the Maroon Peaks at dawn, just tipped by the rosy glow of the early morning sun—a mountain side of yellow aspen in the fall! For everyone who loves the mountains of Colorado—this is it!

#### No. 107—SAN FRANCISCO AFTER DARK (15 slides).....\$2.39

From the Golden Gate at twilight to Chinatown after dark—lights of the city from Telegraph Hill and Twin Peaks—neon reflections on a rainy, foggy night—a set the average traveler couldn't possibly duplicate.

#### No. 108—SAN FRANCISCO, THE BAY AND THE BRIDGES (20 slides).....\$2.98

The Golden Gate and San Francisco Bay from the shore, from the air and from aboard one of the bay ferry boats. You'll get several views of Golden Gate Bridge, the San Francisco Yacht Harbor, Alcatraz and Yerba Buena Islands, the Bay Bridge, the Ferry Building, the San Francisco-Oakland ferries and the Key System interurban line across the Bay Bridge.

#### No. 104—SAN FRANCISCO—FISHERMAN'S WHARF (15 slides).....\$2.49

Recently produced, this colorful slide set covers the famous Fisherman's Wharf by day and by night—crab pots, fishing boats, neon signs!

#### No. 105—SAN FRANCISCO IN SPRINGTIME (20 slides).....\$2.98

Market Street, Union Square, Blum's famous confectionery, sidewalk flower stands, Telegraph Hill, St. Mary's Square, Mission Dolores, Golden Gate Park—with a profusion of spring flowers in almost every scene.

#### No. 106—SIGHTSEEING IN SAN FRANCISCO (20 slides).....\$2.98

Come along to The Top of the Mark, Grizzly Peak, the cable cars, Chinatown, the Hyde Street cable car line, Lincoln Park, Seward Park, the Old Palace of Fine Arts, Cliff House, seal rocks and Ocean Beach.

#### No. 70—SKI TIME IN ASPEN (16 slides).....\$2.49

Here's some real winter fun—the winter beauty at one of America's top ski resorts. Come along with Bob LeMassena who happens to be both a skier and a photographer for a trip to the top of the chair lift and then, on skis, down again.

#### No. 133—SPRINGTIME IN YOSEMITE (20 slides).....\$2.98

Yosemite in the lush green of springtime—waterfalls running full—the Valley—El Capitan—Bridal Veil Fall—Merced River—Wawona Tunnel—Yosemite Falls—Cascades Fall—Nevada Fall—Vernal Fall—Chapel at Old Village—Mt. Watkins and Mirror Lake—meadows and azalea bushes—lupine—early morning in the Valley with smoke from Camp Curry lying over the meadows and the forest.

#### No. 93—TETON NATIONAL PARK (8 slides).....\$1.49

Formerly a Wild Life slide set, this spectacular group of slides contains: Mt. Moran mirrored in Jackson Lake, Tetons from top of the Grand Teton, Lake Solitude, Jenny Lake, The Tetons from within the Church of the Transfiguration, Teton Mountains in winter, Mr. Moran in fall color, the top of the Grand Teton.

#### No. 18—THIS IS NEW ENGLAND (33 slides).....\$4.69

The fall travel of New England—the colorful scenes of Gloucester—the lumber mills of the Maine woods—marble quarries of Vermont—maple sugar time—covered bridges—autumn foliage—blue lakes and streams—summer theatres—Mt. Washington! Here is a general set ideal for supplementing specific material you have photographed yourself—or to give pleasure in enjoying its own quiet beauty.

#### No. 149—TRAIL RIDGE ROAD, ROCKY MOUNTAIN NATIONAL PARK (16 slides).....\$2.49

Trail Ridge Road in Rocky Mountain National Park is perhaps the most spectacular major highway in the United States. Here, from Estes Park Village on the east, to Grand Lake on the west, it ascends to an altitude of 12,183-ft., although it crosses the Continental Divide at Milner Pass at only 10,759-ft. Come along for this breathtaking trip among the lakes and streams, to the perpetual snow-banks above timber line, and then down into the lush green of the valleys to the west.

#### No. 72—TWO MILES HIGH IN ROCKY MOUNTAIN NATIONAL PARK (20 slides).....\$2.98

Come along on the trails that pass the high lakes and streams of Rocky Mountain National Park, up above timberline, where you can see from peak to peak. This set, photographed by Dick Nemmiller, shows what can be done with a camera when you know the country well. You'll be glad you added this to your library.

#### No. 29—WASHINGTON ON THE POTOMAC (31 slides).....\$4.49

Up and down the District of Columbia—the Capitol Building, the Senate, the White House, the Supreme Court, Department of State, U. S. Treasury, Jefferson Memorial, Washington Memorial, Lincoln Memorial—and a great many of the principal Federal buildings. This is a high-spot set.

#### No. 99—YOSEMITE NATIONAL PARK (8 slides).....\$1.49

From the former Wild Life slide line, this small set on Yosemite shows Yosemite Falls, Sentinel Falls, Jeffrey Pine on Sentinel Dome, Bridal Veil Falls with Rainbow, Half Dome from Merced Bridge, Vernal Falls, El Capitan and the famous Yosemite Fire Fall.

#### No. 100—ZION NATIONAL PARK (8 slides).....\$1.49

From the former Wild Life line of slide sets, this small set on Zion National Park is particularly good and contains scenes of The Altar of Sacrifice, The Watchman in the Evening, Mt. Spry up Virgin River, East Temple, Virgin River in October, Angels Landing from Virgin River, The First Patriarch, The Great Throne in November.

#### No. 60—ZION NATIONAL PARK (19 slides).....\$2.98

Here's a colorful and effective slide set about one of our most colorful national parks. The reds and roses of Zion's rock formations are in most effective contrast to the deep blue sky and the billowy white clouds.

### Europe

#### No. 56—ANCIENT GREECE TODAY (47 slides).....\$6.98

One of the most colorful slide sets we have yet offered when measured by some of the spectacular costumes pictured in some slides. Here's a beautifully photographed group of slides showing some of Greece's ancient wonders such as The Acropolis, the Parthenon, the Temple of Zeus, Byzantine Churches, the cities, the countryside and the people.

#### No. 45—BELGIUM THE BEAUTIFUL (36 slides).....\$5.49

A particularly lovely set of slides showing many of the beautiful, centuries-old buildings in Brussels, Antwerp, Bruges, Liege and much of Belgium's colorful countryside.

#### No. 7—ENGLAND—TOWN AND COUNTRY (49 slides).....\$5.98

Here is a cross-section of England, its historic villages, pastoral countryside, its lake region, its industrial cities, its industries and crafts. An outstanding supplementary set to LONDON, for those who have seen England—or one day hope to.

#### No. 9—FAIR FRANCE (58 slides).....\$7.98

Famous Chateaux, Mont St. Michel, Brittany, Lourdes, La Havre, St. Malo, Normandy, Rouen, Tours, Lyon, Marseilles, Nice, Deauville, Cannes—the countryside of France from its harvests of potatoes, grain, and fruits—to its Alpine villages. A lovely set containing a number of slides that are of salon quality.

#### No. 44—HOLLAND—HIGH SPOTS IN THE LOWLANDS (42 slides).....\$5.98

Amsterdam, the Hague, Volendam, Rotterdam, the Zuider Zee—lovely cities—countryside and canals—windmills—fields of flowers.

#### No. 41—ITALY—NAPLES, POMPEII, SORRENTO AND CAPRI (19 slides).....\$2.98

A beautiful set of slides from a most beautiful section of Italy. Excellent in color—beautifully photographed—beautifully printed. Highlights of Naples and the Bay, Pompeii, Sorrento and Capri are shown.

#### No. 38—ITALY—ROME, ST. PETER'S AND THE VATICAN (29 slides).....\$3.98

Here are highlights of the Eternal City—Rome, both ancient and modern—the Colosseum, Constantine Arch and The Forum—streets and boulevards—scenes around St. Peter's—the Vatican and its colorful Swiss guards.

#### No. 39—ITALY—VENICE, FLORENCE, PISA AND MILAN (42 slides).....\$5.98

Here's a tour of many of the great cities in Italy's north—Venice, Florence, Milan, Pisa, Siena and Genoa—beautifully photographed. This is one of the finest sets of slides yet issued.

#### No. 35—NORWAY, LAND OF THE MIDNIGHT SUN (43 slides).....\$6.98

A most striking tour of the land of the fjord—Oslo, Bergen, Alesund—fjords and forests—and two enchanting shots made by the light of the midnight sun.

#### No. 36—PICTURESQUE AND PROGRESSIVE DENMARK (43 slides).....\$6.98

Here's a tour of the land of Hans Christian Andersen, and an amusing fairy tale tour it is, too. Copenhagen, Aarhus, Aalborg, Odense and Jutland. Public buildings—both modern and of great years—castles and cottages—Royal Copenhagen Porcelain, Georg Jensen Silver—windmills and folk dancers.

#### No. 8—PARIS ON THE SEINE (47 slides).....\$6.98

Of many cities in the world, Paris is the one which most of us know Paris well, as well as those of you who, as yet, have visited it only in pictures. Our start is the Eiffel Tower with sweeping views of the city—Notre Dame—Sacre Coeur—Montmartre—flower market—bookstalls—sidewalk cafes on the Champs Elysees—Arch of Triumph—Statue of Joan of Arc—the Paris Opera—Rue de Rivoli—Versailles—Louvre—Place de la Concorde—Gare du Nord—Chantilly—Longchamps.



## No. 6—SIGHTSEEING IN LONDON (50 slides).....\$6.98

London, the world's largest city, is perhaps the most-visited spot in Europe for American tourists. This 50-slide set shows practically every major spot and area, expertly photographed by Edwin E. Olsen, ace cameraman of Dudley Pictures Corporation. For those of you who saw London during the war, for those of you who have "toured" since then, and for those of you who have never been there, this is a very satisfactory set.

## No. 13—SKY-HIGH SWITZERLAND (43 slides).....\$5.98

One of Blackhawk's most beautiful slide sets! We see such famous Swiss cities as Geneva, Berne and Zurich, the Alpine vacation spots of St. Moritz and Zermatt, the lakes, rivers and rushing mountain streams, the people, a shot or two of its railroads, and go high up in the Matterhorn. Highly recommended!

## No. 37—VIKING LAND, SWEDEN (40 slides).....\$5.98

Come along with us to Stockholm, Gothenburg and Malmö—see both the new and the old—both always beautiful—in bustling Sweden. Come along on the Gota Canal, or to a paper mill, or to the Gustafsberg Porcelain Works, or to Vadstena Castle. See a 6th-Century Viking Burial Ground.

## The Pacific

## No. 16—BALI TODAY (25 slides).....\$3.98

The exotic and far-away land of Bali. We see their temples and crafts, their primitive agricultural system, their elaborate dances and costumes, and the people themselves. We see the Bali of today, no longer under the rule of the Dutch.

## No. 1—HAWAII—OUR VACATION PARADISE (50 slides).....\$6.98

Here's as lush a set of 2" x 2"s as you're likely to run across for a good long time to come. Shown are virtually all of the highlights that a tourist would likely see on a trip to Hawaii—arrival of the Lurline and one of United Air Line's great planes—both met by the traditional group of hula girls and a native Hawaiian orchestra—highlights of Honolulu, its historic buildings, vacation hotels—the country roundabout with its pineapple and sugar industries and, of all things, a cattle ranch—the flowering shrubs and trees of the tropics—the palms, blown by the trade winds—and the surf and surf-boaters. There are some absolutely salon quality shots in this set.

## The Orient

## No. 75—INDIA—THE LAND AND ITS PEOPLE (36 slides).....\$5.49

These slides were formerly contained in our king-sized set, "India, the Land of Song and Story." Here you see the people of India—the Holy men, the fakirs, the snake charmers, farmers, barbers, merchants, ivory carvers and other artists. New, improved color printing.

## No. 55—JAPAN, THE OLD AND THE NEW (38 slides).....\$5.98

A particularly interesting set showing the contrasts of modern Japan. There are several slides of Fujiyama, rice harvesting and threshing, Geisha girls, a Japanese wedding party, the famous Daibutsu of Kamakura, the temple of Nara, Heian Shrine at Kyoto, the Torii at Miyajima, the famous three monkeys at Nikko, Heron Castle at Himeji, cherry blossom time at Kamakura, the famous cloisonne enamel work at Nagoya, pearl farming and the gathering and selecting of cultured pearls, Hiroshima, and modern Tokyo and Osaka.

## No. 101—THE SONG OF INDIA (22 slides).....\$3.49

Here is the fairy tale land of India—the Taj Mahal, palaces of the Maharajas—pictured by both day and night—the temples! These slides were formerly contained in our large set titled "India, the Land of Song and Story." New improved color printing.

## KOREA

Here are five new 2"x2" color slide sets on the various phases and areas in the Korean War covered by American troops. They will be of particular interest to GIs who served in Korea, for they show many GI activities, including some combat operations, as well as background material on the country.

## No. 51—KOREA—SEOUL-CHUNCHON AREA (26 slides).....\$3.98

## No. 52—KOREA—INCHON AREA (20 slides).....\$2.98

## No. 54—KOREA—PUSAN AREA (38 slides).....\$5.69

## No. 50—KOREA—ALONG THE 38th (23 slides).....\$3.49

## No. 49—KOREA—RAILWAYS IN WARTIME (12 slides).....\$1.89

## The Middle East

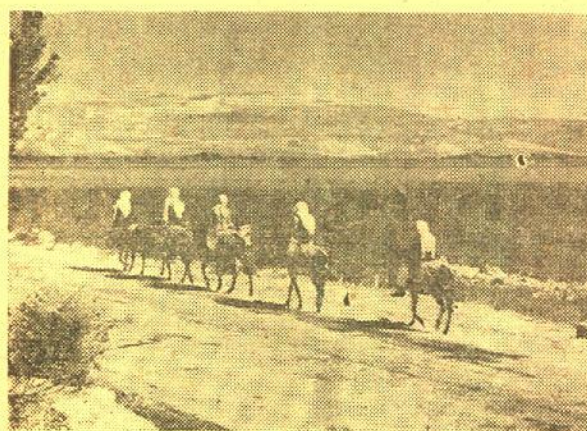
## EGYPT

With Egypt and Suez in the world spotlight, these three new 2"x2" color slide sets will be of particular interest. They deal with three different areas in the Egyptian picture and, either today or tomorrow, will be valuable additions to any slide library.

## No. 46—EGYPT—THE PEOPLE, THE NILE AND SUEZ (24 slides).....\$3.49

## No. 47—EGYPT—ITS ANCIENT WONDERS (31 slides).....\$4.49

## No. 48—EGYPT—MODERN CAIRO AND ALEXANDRIA (25 slides).....\$3.69



## No. 2—ISRAEL, LAND OF THE BIBLE (50 slides).....\$6.98

Here is an inspiring set of softly colored 2" x 2" slides taken recently in the new-born land of Israel, and showing many of the modern accomplishments that the people of this country have achieved—and showing, too, many of the sacred spots from the Bible—Bethlehem, Galilee, Nazareth, Capernaum, Jerusalem, the Jordan Valley.

## BLACKHAWK'S Historical 2"x2" Slides Our Fighting Forces

## No. 34—BATTLES OF THE CIVIL WAR (28 slides).....\$3.98

Here is an extraordinary set of slides—full color reproductions of the original art works in the Library of Congress—the originals having been painted in the decade or two immediately following the Civil War. There is tremendous detail, and almost every major engagement of the war from 1861 to 1865 is covered.

## No. 30—BRADY PHOTOGRAPHS OF THE CIVIL WAR (24 slides).....\$3.49

A group of twenty-four photographs of the Civil War, mostly by a famous photographer, Brady, and from his negatives now in National Archives. Master positives of these photographs have been carefully hand colored to simulate natural color, then photographed and printed in Eastman color to achieve a reasonably natural and realistic effect. There are photographs of Lincoln, battlefields, forts, prisons, Gen. McClellan, Gen. Burnside, Clara Barton, Fort Sumter. This is an unusual collector's set.

## No. 12—CAPTURED GERMAN ARMY PICTURES (22 slides).....\$3.49

Here is an unusual set of slides that will have particular appeal for every veteran of World War II who served on the continent of Europe. Copied from captured German Army color plates, these slides show some of the typical action and movement on both the eastern and western German fronts between 1941 and 1944—and the color is surprisingly

## No. 124—DRESS UNIFORMS OF THE U. S. ARMY, 1902-1907 (14 slides).....\$2.19

In the period between the Spanish-American War and World War I, the United States was assuming new stature among the nations of the world, our growth was continuing at tremendous strides, the industrial revolution was well under way, and the Army had a period in which its dress uniforms were really something. Perhaps today they look a bit like they came from the costume department of an opera or operetta company, but they do make a most interesting subject for a group of slides. This set, by the way, was copied from a group of perfect colored lithographs of the period.

## No. 71—SO PROUDLY WE HAIL (13 slides).....\$1.98

A most different group of 13 color slides photographed from paintings that are so life-like they have almost photographic quality. They cover most of America's major military activities from the Revolution to Korea, including "Merry Christmas, 1776, at the Battle of Trenton"; "The Road to Fallen Timbers, Maumee, Ohio, 1794"; "Those Are Regulars, By God"—Chippewa, Upper Canada, 1814; "Remember Your Regiments"—Resaca de la Palma; "First At Vicksburg"; "Good Marks—manship and Guts"—Fort Phil Kearney, The Wagon Box Fight; "Gatlings to the Assault"—San Juan Hill; "I'll Try Sir"—Boxer Rebellion; "Knocking Out the Morros"—Philippine Islands; "The Rock of the Marne"—July, 1918; "Follow Me"—Levee, P. I., 1944; "Remagen Bridgehead"—The Ludendorf Bridge, 1945; and "Break-through at Chipyong"—Korea, 1951.

## No. 146—THE SPANISH-AMERICAN WAR ON LAND AND SEA (16 slides).....\$2.49

Reproduced from authentic and original colored lithographs of the period, this is a unique color slide set. See the explosion of the Maine; Admiral Dewey's flagship, the Olympia; the Battle of Manila; the first hoisting of the Stars and Stripes by Marines on Cuban soil; the naval battle of Santiago; the Battle of LaQuasina; the bombardment of San Juan; Col. Theodore Roosevelt and the Rough Riders; Gen. Toral's Surrender of Santiago; the Battle of Paeo and the Battle of Quingua.

## No. 69—UNION GENERALS OF THE CIVIL WAR (8 slides).....\$1.49

Reproduced from authentic and original art work of the years following the Civil War, these several color slides have a surprisingly life-like quality. You'll see Gen. McClellan at Antietam; Gen. Burnside at Fredericksburg; Gen. Hooker at Chancellorsville; Gen. Meade at Gettysburg; Gen. Thomas at Chickamauga; Gen. Grant in the Wilderness; Gen. Sherman at Kennesaw Mountain and Gen. Sheridan at Five Oaks.

## No. 123—U. S. ARMY UNIFORMS FROM THE REVOLUTION TO THE SPANISH-AMERICAN WAR (23 slides).....\$3.49

Here is a set to go right along with reading American Heritage or the monthly periodicals in general. Copied from beautifully detailed lithographs made in the latter part of the 19th century, these slides show, in spectacular color, uniforms used by our fighting forces from the independent companies of the Continental Army up to those used at the time of the Spanish American war.



## The Stage

## No. 122—BEHIND THE FOOTLIGHTS—THEATRICAL POSTERS OF THE GASLIGHT ERA (16 slides).....\$2.49

This set really turns back the clock. Photographed from original and well-preserved lithographed posters such as used to decorate the billboards and the fences, you'll view what was once used to advertise William Gillette's "Held by the Enemy," Charles Frohman's "The Hand of Destiny," Hoyt's "A Midnight Bell," William A. Brady's "Old Glory," William Gillette's "Secret Service," Bronson Howard's "The Greater Shenandoah," "Uncle Tom's Cabin" and as many more colorful productions of the time.

## No. 121—THE WICKED STAGE—THEATRICAL POSTERS OF THE GAY NINETIES (13 slides).....\$1.98

We can just imagine the comments from members of the local Ladies Aid Society when a touring company was advertised by these posters on the town's billboards. De Vere's High Rollers Burlesque Company... the Joseph Hart Vaudeville Company... Brady and Ziegfeld present the Merry Makers Burlesque Company... Miss New York, Jr. On the Bowery... Sporting Life... The Tarrytown Widow... and five others. Something special for your collection—and a sensation when you show them to your guests!

## The Circus

(See also "Circus Train—Last Days of the Big Top" in the group of Railroad Slides)

## No. 110—CIRCUS, 1875 (13 slides).....\$1.98

Here is an intriguing set of color slides photographed from original color photographs of the 1870s and showing the grand layout of the circus, bareback riders, the calliope, lion tamer, circus elephant, aquarium and the snake wagon. This is a real collector's item!

## The Movies

## No. 78—COMING SUNDAY! (20 slides).....\$2.98

Here is a collection of coming attractions from the 1920-1926 era of the silent screen. Many of your favorites will again come to life in your memory—and your friends will get a great kick—when you show this bang-up group of coming attraction slides which includes: William S. Hart in "The Testing Block"; D. W. Griffith's "Way Down East"; Lon Chaney in "The Trap"; Douglas MacLean in "The Sunshine Trail"; Jackie Coogan in "Long Live the King"; Norma Talmadge in "The Voice From the Minaret"; George Arliss in "The Green Goddess"; Wesley Barry in "The Printer's Devil"; Virginia Valli in "The Signal Tower"; Tom Mix in "The Last of the Dnanes"; Rudolph Valentino in "The Eagle" and Monte Blue in "Red Hot Tires". Be one of the first to own this enjoyable collection!

## No. 141—MORE PHOTOPLAYS OF 1918 (13 slides).....\$1.98

Mitchell Lewis in "Code of the Yukon," Shirley Mason and Ernest Truex in "Come On In," Lila Lee in "The Cruise of the Make Believes," Harry Morey in "The Desired Woman," Fred Stone in "The Goat," Herbert Rawlinson in "Smashing Through," Mary Pickford in "Stella Maris" and others.

## No. 77—NICKELODEON! (14 slides).....\$2.19

Real coming attraction slides from the period of the Motion Picture Patents Company up to World War I—such long ago company names as Kalem, Biograph, Lubin, Keystone, Selig, Edison—not to mention Theda Bara in "Cleopatra", Harold Lockwood and May Allison in "Piedra Island", Charlie Chaplin in his famous Mutual Comedies, Roscoe "Fatty" Arbuckle in "A Reckless Romeo", Douglas Fairbanks and Wallace Reid. A real collector's bonanza.

## No. 112—PHOTOPLAYS OF 1917 (13 slides).....\$1.98

Contains such slides as "The Beloved Adventurer" with Kitty Gordon, "Little Miss Optimist" with Vivian Martin, "The Price She Paid" with Clara Kimball Young, "Reaching for the Moon" with Douglas Fairbanks, "What Money Can't Buy" with Jack Pickford and Louise Huff, "The Winning of Sally Temple" with Fannie Ward.

## No. 113—PHOTOPLAYS OF 1918 (13 slides).....\$1.98

Contains "A Daughter of Frances" with Virginia Pearson, "A Daughter of the Old South" with Pauline Frederick, "The Debt of Honor" with Peggy Hyland, "Eve's Daughter" with Billie Burke, "The Heart of Wetona" with Norma Talmadge, "A Mother's Sin" with Earle Williams, "Toys of Fate" with Nazimova—and six others.

## No. 118—PHOTOPLAYS OF 1919 (13 slides).....\$1.98

Contains a superlative group including: "The Avalanche" with Elsie Ferguson, "Come Out of the Kitchen" with Marguerite Clark, "The Exquisite Thief" with Pricilla Dean, "The Firing Line" with Irene Castle, "His Majesty, the American" with Douglas Fairbanks, "Johnny Get Your Gun" with Fred Stone, "The Perfect Lover" with Eugene O'Brien, "The Two Brides" with Lina Cavalieri.

## No. 138—PHOTOPLAYS OF 1920 (13 slides).....\$1.98

"Dead Men Tell No Tales," Mack Sennett's "Down on the Farm," Mrs. Sidney Drew in "The Emotional Miss Vaughn," Olive Thomas in "The Flapper," Douglas Fairbanks in "The Mark of Zorro," Mae Murray in "On With the Dance," William S. Hart in "Sand," William Faversham in "The Sin That Was His," Larry Semon in "The Stage Hand," Rubye de Remer in "The Way Women Love" and others.

## No. 114—PHOTOPLAYS OF 1921 (13 slides).....\$1.98

Contains such slides as "Dream Street," produced by D. W. Griffith; "Gilded Lies" with Eugene O'Brien, "The Marriage of William Ashe" with May Allison, "The Three Musketeers" with Douglas Fairbanks, "Virtuous Wives" with Anita Stewart.

## No. 119—PHOTOPLAYS OF 1922 (13 slides).....\$1.98

Among the slides contained in this set are: "Five Days to Live" with Sessue Hayakawa, "Flesh and Blood" with Lon Chaney, "The Greater Duty" with G. M. Anderson, Col. Wm. N. Selig's "The Jungle Goddess," "One Glorious Day" with Will Rogers and Lila Lee, "Under Oath" with Elaine Hammerstein, "Wolf Law" with Frank Mayo.

## No. 120—PHOTOPLAYS OF 1923 (13 slides).....\$1.98

Contains a very representative selection of films of that year, including: "Crumps" with Theodore Roberts, "Haunted Valley," a serial starring Ruth Roland, "Homeward Bound" with Thomas Meighan, "Look Your Best" with Colleen Moore, "Our Hospitality" with Buster Keaton, "Refuge" with Katherine MacDonald, "The Virginian" with Kenneth Harlan, D. W. Griffith's "The White Rose."

## No. 139—PHOTOPLAYS OF 1924 (13 slides).....\$1.98

Viola Dana in "Don't Doubt Your Husband," Richard Barthelmess in "The Enchanted Cottage," Johnny Hines in "The Early Bird," Larry Semon in "The Girl in the Limousine," Douglas MacLean in "Never Say Die," Norma Talmadge in "The Only Woman," Lloyd Hamilton in "The Self Made Failure," Barbara La Marr in "The Shooting of Dan McGrew," Douglas Fairbanks in "The Thief of Bagdad" and others.

## No. 140—PHOTOPLAYS OF 1926 (13 slides).....\$1.98

Johnny Hines in "The Crackerjack," Barbara La Marr in "The Girl from Montmartre," "Hogan's Alley" with Monte Blue, Clara Bow in "The Keeper of the Bees," "The Last Alarm," Charles Ray in "Percy," D. W. Griffith's "Sally of the Sawdust," Rudolph Valentino in "The Son of the Sheik," Rin-tin-tin in "Tracked in the Snow Country" and others.

## No. 136—RAILROAD MOVIES OF THE SILENT ERA (13 slides).....\$1.98

Here are "Coming Attractions" slides on such railroad thrillers as "Casey Jones," "The Limited Mail," "The Midnight Express," "The Open Switch," "Roaring Rails," "The Westbound Limited" and others.

## No. 137—TWO REEL COMEDIES OF THE SILENT ERA (16 slides).....\$2.49

How many of these do you remember? Larry Semon in "The Agent," Jimmy Aubrey in "The Blizzard," Bobby Vernon in "French Pastry," Lloyd Hamilton in "Lonesome," Jimmy Adams in "Nerve Tonic," Charley Chase in "No Father To Guide Him," Our Gang in "Playin' Hokey," Ben Turpin in "Romeo and Juliet," Mack Swain in "Thirst" and Smiling Bill Parsons in "The Widow's Might."



## No. 76—ONE MOMENT PLEASE! (17 slides).....\$2.69

Here's the real thing from the Nickelodeon era—the "between reels" and intermission slide. And these are the genuine article, copies from the hand colored 3/4x4-inch stereopticon slides of the 1910-1918 period. There are such as: "No Smoking or Spitting Allowed, Order Board of Health"; "Positively No Whistling, Stamping or Loud Talking Allowed in This Theatre"; "Why Don't You Try This (Baby's Bottle Show), Madam?"; "Ladies and Gentlemen, Please Remove Your Hats"; "Any Suggestions for the Betterment of This Show Will Be Greatly Appreciated by the Management"; "Ladies and Children Are Cordially Invited—No Pictures Will Be Shown That Can Possibly Offend"; "Grand Double Program Saturday and Sunday—Admission, Adults, 10c, Children, 5c"; "Just A Moment Please To Change Film"; "President Wilson Has Asked Americans To Preserve Absolute Neutrality During the War Abroad. Please Refrain from Partisan Applause in Viewing This Picture, Thereby





Scene from "Circus Train—Last Days of the Big Top"

## Railroad Slides

### No. 148—BALTIMORE & OHIO 2-8-2s AT NORTH VERNON, INDIANA (13 slides).....\$1.98

One of the last concentrations of B. & O. steam power is the stable of 2-8-2s at North Vernon, Indiana. In this set of thirteen slides, we see Nos. 313, 322, 332, 335 and 339, each unit cross indexed with its former number in the 4500-series, and shown with smoke and steam. Photographed between 1957 and 1958.

### No. 24—BESSEMER AND LAKE ERIE (14 B&W slides).....\$1.49

Another Fred McLeod set showing some swell shots of this famous coal and ore carrier running from the Pittsburgh area to Lake Erie. Most of the shots are of steam power, including the B. & L. E.'s passenger. Not great in numbers, but really high in quality.

### No. 3a—THE CALIFORNIA ZEPHYR IN FEATHER RIVER CANYON (20 slides).....\$2.98

A revision of our slide set formerly titled WESTERN PACIFIC, FEATHER RIVER CANYON. This new set covers the inside and outside of the famous train from Oakland Pier to the Sierra Nevada.

### No. 42—CAROLINA SHORT LINES (19 slides).....\$2.98

A new set by H. Reid of the steam-powered railroad short lines in the Carolinas. In the set are shots of steam power on the Winston Salem Southbound, Rockingham Railroad, Virginia and Carolina Southern, Cliffside Railroad and East Carolina Railroad. A set of superior quality, and unusual appeal.

### No. 63—CHICAGO-TWIN CITY STREAMLINERS (33 slides).....\$4.98

Almost every railroad fan will have more than passing interest in this set photographed by Richard Neumiller. It covers the railroad speedways between Chicago and St. Paul and Minneapolis on the Milwaukee, North Western and Burlington railroads, and the St. Paul and Minneapolis interchange tracks of the Northern Pacific and Great Northern. All of the principal streamliners between these cities are shown at speed, and some freights are shown at spots of unusual interest.

### No. 74—CIRCUS TRAIN—LAST DAYS OF THE BIG TOP! (30 slides).....\$4.59

This slide set couldn't be photographed today—and we're mighty glad it was taken just two or three years ago. We see the unloading of the show trains of Ringling Brothers and Barnum and Bailey's Combined Shows—taking the circus wagons off the flats—taking the horses, elephants and other "fame" animals out of the cars—putting up the big top, with Jumbo supplying some real elephant power—and the show is ready to go!

### No. 26—CIVIL WAR RAILROADS (13 slides).....\$1.98

Here are thirteen Brady photographs of Civil War Railroads from National Archives. Master positives of these photographs have been carefully hand colored to simulate natural color, then photographed and printed in Eastman Color to achieve a reasonably natural and realistic effect. We see locomotives, railroad yards and bridges. Here is a rare collector's set.

### No. 128—DONNER PASS ON THE SOUTHERN PACIFIC (16 slides).....\$2.49

Snowsheds—eastbound and westbound freights—Donner Lake—the eastbound Overland—Cape Horn—Truckee River Canyon—westbound Overland passing Lake Van Norden—inside the snowsheds at Norden—westbound extra freight at Truckee—Truckee Station. Here's some real mountain railroading at one of the most romantic spots on The Overland Trail.

### No. 127—EDELSTEIN HILL ON THE SANTA FE (13 slides).....\$1.98

For our railroad fans—how many of whom would believe that one the main line of the Santa Fe in the flat prairie state of Illinois there would be a hill that even in the age of diesels sometimes requires a pusher locomotive at the end of a heavy freight. But at Edelstein Hill, a few miles west of Santa Fe's division point of Chillicothe, Illinois, where the main line comes up from the Illinois River bottom-lands, that's just what happens. And when it doesn't, there's plenty of roar from the diesels headed up the hill, and even more noise from the dynamic brakes of the diesels coming down. You'll get a good look at a number of Santa Fe's flashiest trains.

### No. 129—THE HIGH SIERRAS FROM A CABOOSE (13 slides).....\$1.98

Come along with Jim Morley aboard a westbound extra freight on the S. P. between Sparks and Roseville. Along the Truckee River—tunnel near Yuba Pass—snowsheds—Truckee River Canyon—Donner Lake—not to mention train to train shots of passengers and freights as seen from the caboose.

### No. 22—HORSESHOE CURVE, PENNSYLVANIA RAILROAD (76 B&W slides).....\$5.98

Here's a king-sized set on a king-sized subject—the Pennsylvania Railroad's Horseshoe Curve, just west of Altoona, Pa., showing the Pennsy's famed steam-power selected from hundreds of the best photographs made by Fred McLeod in 1948, 1949 and 1950—with a few in more recent years, included are spectacular examples of most of the Pennsy's modern steam power—with a few remnants from another day. Many of the locomotives shown in terrific action shots have been scrapped. A collection like this simply can't be replaced.

### No. 64—ILLINOIS CENTRAL—STEAM ACROSS THE PRAIRIE (16 slides).....\$2.49

Photographed by railfan Paul Meyer, this short set of Illinois Central steam locomotives in action between the Kankakee area in Illinois to Paducah, Kentucky, contains some exceptionally good shots of 0-8-0s, 4-6-2s, 2-8-2s and 2-8-0s.

### No. 117—IOWA ELECTRIC RAILWAYS (20 slides).....\$2.98

For several years, rail fans across the country have periodically been writing us: "How about a movie or a slide set on trolley lines?" Well, we finally have come through with a slide set, and a good one, showing many of the last-remaining electric lines in the country—right here in our own state of Iowa. You'll see the Southern Iowa Railway; the Fort Dodge, Des Moines and Southern (now all diesel); the Waterloo, Cedar Falls and Northern (now all diesel); the Charles City Western; the Mason City and Clear Lake; and the Cedar Rapids and Iowa City. No juice fan is going to be disappointed with this set, photographed by Charles Franzen—who knew what he was doing.

### No. 73—KANSAS CITY TERMINAL (18 slides).....\$2.79

Another Blackhawk slide set for railroad fans photographed by railfan, Dick Neumiller, Kansas City is a colorful terminal because of the number of different railroads that use it, each with their locomotives and trains of a different color. You'll see the Chicago Great Western, Rock Island, Santa Fe, Wabash, Burlington, Kansas City Southern, Missouri Pacific, Frisco and Union Pacific near or within the general orbit of Kansas City.

### No. 125—NEW YORK CENTRAL STEAM LOCOMOTIVES AT INDIANAPOLIS (13 slides).....\$1.98

Photographed in the twilight days of steam, when many of the Central's great 4-6-4s and 4-8-2s were downgraded by the onrush of the diesels, this effective set, photographed by railfan Dr. Sophocles Marty, show some of these iron monsters smoking and steaming on cold winter days in and around Indianapolis. There are several 0-6-0s, 0-8-0s and 2-8-2s in evidence, too.

### No. 126—NICKEL PLATE 2-8-4s (13 slides).....\$1.98

Of all railroads, probably the Nickel Plate is most closely associated with the 2-8-4 type locomotive than any other, even though the type first appeared on the old Boston and Albany. This is probably because such a high percentage of the Nickel Plate's modern steam power has been engines of this wheel arrangement. And, they're a photogenic lot, as this new set by Paul Meyer discloses.

### No. 27a—NORFOLK AND WESTERN (32 slides).....\$4.98

A newly revised set of outstandingly good color slides on America's last major user of steam locomotives, by veteran railroad photographer, H. Reid. A wide variety of N. & W.'s steam power is shown against the pictorially effective setting of the Virginia countryside.

### No. 109—PENNSY STEAM LOCOMOTIVES (13 slides).....\$1.98

This is a new shorter set of slides incorporating some of the same pictures included in the now discontinued Blackhawk Slide Set No. 11, "The Pennsy in Pennsylvania." Photographed by Fred McLeod almost ten years ago, this all-steam set shows some dramatic stuff at Horse-shoe Curve and elsewhere on the Pennsy in Pennsylvania. This set printed by an improved color process.

### No. 28—RAILROADS OF THE OLD DOMINION, AND THE MIDDLE SOUTH (27 slides).....\$3.98

A thirty-two slide set made at various locations around the Old Dominion State by photographer-writer, H. Reid, frequent contributor to Trains Magazine, Locomotives of the E. T. & W. N. C., Virginia Blue Ridge, Shenandoah Central, North American Rayon, U. S. Army, C. & O., Norfolk and Portsmouth Belt and Virginian. A variety of appealing shots.

### No. 17—RAILROADS U. S. A. (47 slides).....\$6.98

Photographed since the war, RAILROADS U. S. A. is the story of railroads in transition—the change from steam to diesel—with a great many excellent shots of now-vanished steam power. It covers the country from the Canadian Pacific in New Hampshire to the Southern Pacific in California—from the railroads of the southeast to those of the southwest. For every railroad fan, this set is a must!

### No. 53—RIO GRANDE NARROW GAUGE (20 slides).....\$2.98

Here's almost a collector's set of narrow gauge activity on the Rio Grande's line between Alamosa and Durango, Colo., the line that weaves back and forth from Colorado into New Mexico and crosses the fabled Cumbres Pass.

### No. 116—THE ROCK ISLAND—YESTERDAY AND TODAY (35 B&W slides).....\$2.98

This set of exceptional black and white slides is copied from black and white negatives and old photographs in the archives of The Rock Island, starting with a photo of the Rock Island's first train between Chicago and Joliet in the 1950s up to its ultra-modern Talgo-type Jet Rocket.

### No. 147—ST. LOUIS TERMINAL (20 slides).....\$2.98

Come along to one of the busiest multi-railroad passenger stations in the U. S. A.—St. Louis Union Station—and some of the railroads fanning out from this colorful terminal. You'll see trains of the Pennsylvania, Wabash, G. M. & O., New York Central, Illinois Central, Cotton Belt, Missouri Pacific, B. & O., Frisco, M. K. T., Rock Island and the Burlington. Photographed between 1955 and 1957.

### No. 40—THE SANTA FE CHIEFS (30 slides).....\$3.98

A fine selection of color shots of The Chief, The Super Chief, The Texas Chief and The San Francisco Chief at various points stretching from Illinois to Texas to California.

### No. 23—THE SANTA FE, YESTERDAY AND TODAY (57 B&W slides).....\$4.49

Here's a pictorial spread of Santa Fe motive power and Santa Fe trains stretching from the 1880's to today. There are good close-up shots of many of the old Santa Fe locos with wheel arrangements like 4-4-0, 2-6-0, 4-6-0, 2-8-0, 4-8-0, 4-4-2 and right on up to the road's tremendous 4-8-4s from the last days before the diesels took over. Santa Fe's trains—going all the way back to the first California Limited into L. A. in the 1890s—are shown. Great shots of steam at Raton and Cajon. A whiz of a set!

### No. 115—SEABOARD STEAM LOCOMOTIVES (56 B&W slides).....\$4.98

H. Reid has been trailing steam locomotives over Virginia and the Carolinas for the last ten years. This set of slides is copied from some of his best black and white negatives of Seaboard steam locomotives photographed in the late 1940s and the very early 1950s. Most of the engines covered by this slide set have long since been scrapped.

### No. 65—SOUTHERN RAILWAY STEAM LOCOMOTIVES (60 B&W slides).....\$4.98

This set of sixty 2"x2" captioned slides is copied from H. Reid's originals photographed in 1947, 1948, 1949 and 1950. These are all black and white—but show a great many steam locomotives that have long since been scrapped.

### No. 10—VIRGINIAN RAILROAD STEAM LOCOMOTIVES (23 slides).....\$3.79

Photographed by H. Reid down Norfolk way, this slide set shows a number of excellent examples of Virginian steam locomotives including several outstanding close-ups of locomotive working parts.

## BIBLE PICTURE STORIES in 2"x2" COLOR SLIDES

Price, each 2"x2" color slide set of about 40 slides.....\$2.77

Any four sets.....\$9.99 Any twelve sets.....\$24.99

Now the Old Testament of the Bible is available in 2"x2" color slide form for use by all denominations. The stories of the leaders, the patriarchs, the warriors, the prophets—all the great heroes of the Old Testament era—stories that have lived for centuries and that will live forever—are available in for the first time in color slide form. Our supply of these slides is limited, and no more will be available at these prices once this stock is sold.

Each slide set is made up of approximately 40 2"x2" single frame color slides in numbered mounts. (The transparency area of a single frame slide is somewhat smaller than the normal double frame transparency, but the mount is of standard 2"x2" dimension and projects in any 2"x2" slide projector, whether manual, magazine or automatic type.)

B-4 ABRAHAM, Part 2  
B-6 JACOB AND ESAU  
B-8 JOSEPH IN EGYPT, Part 2  
B-9 MOSES, Part 1  
B-11 JOSHUA, Part 1  
B-12 JOSHUA, Part 2  
B-13 GIDEON  
B-14 SAMSON  
B-15 RUTH  
B-16 SAMUEL  
B-17 SAUL  
B-18 DAVID, Part 1  
B-19 DAVID, Part 2

B-20 DAVID, Part 3  
B-21 SOLOMON  
B-22 ELIJAH  
B-23 ELISHA  
B-24 ISIAH  
B-25 JOSIAH  
B-26 ESTHER  
B-27 JEREMIAH  
B-28 EZEKIEL  
B-29 NEHEMIAH  
B-30 DANIEL, Part 1  
B-31 DANIEL, Part 2

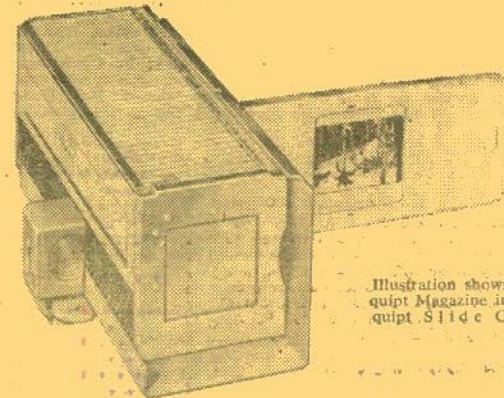


Illustration shows Airequip Magazine in Airequip Slide Changer

## AIREQUIPT MAGAZINES FOR 2"x2" SLIDES

Here is the genuine Airequip Slide Magazine, the standard semi-automatic carrier for the majority of 2"x2" slide projectors. Sturdy construction of lightweight metal provides excellent protection for slides. Permanent metal frame provided for each slide. Slides easily inserted or removed without damage. Index card permanently attached. Each magazine holds 36 slides. Manufacturer's list price, \$2.25 per magazine. Our No. 17-01.

Blackhawk price each.....\$1.77 Six for.....\$9.99

## IMC MOLDED PLASTIC SLIDE TRAYS

Here is a fine quality, but economically priced, molded plastic slide tray that fits the carrier on Viewlex, TDC, Bell & Howell, Keystone and Americal Optical automatic and semi-automatic units. Holds 36 slides. Manufacturer's list price, \$1.00 each. Our No. 17-02.

Blackhawk price each.....89c  
3 for \$2.49 12 for \$7.98

## KEYSTONE S-40 PLASTIC SLIDE TRAY

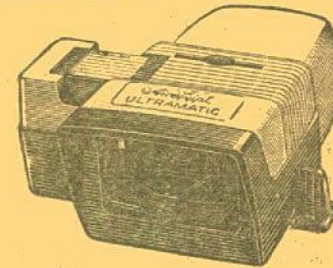
Here's the king-sized Keystone molded plastic slide tray for use in the carriers on the Keystone, American Optical Executive, Bell & Howell, TDC and Viewlex automatic and semi-automatic units. Holds forty—yes, we said forty—slides. Our No. 17-03.

Blackhawk price each.....89c  
3 for \$2.49 12 for \$7.98

## YANKEE MOLDED PLASTIC SLIDE TRAY

Here's a fine quality—economically priced—molded plastic slide tray for use in the automatic and semi-automatic carriers on the Revvert and Wollensak 2"x2" slide projectors. Holds 36 slides. Our No. 17-04.

2 for \$1.79 Six for \$4.98



## Airequip ULTRAMATIC 2"x2" COLOR SLIDE VIEWER

The first magazine-load color slide viewer—shows 20 slides automatically! Comes complete with one 20-slide magazine and two C-type batteries.

Airequip Ultramatic Viewer, complete with one 20-slide magazine and batteries; list price, \$14.95; our No. 18-01, Blackhawk's price.....\$12.95

Extra 20-slide magazines, our No. 17-05, each.....49c



## AIREQUIPT CARRYING CASES FOR AIREQUIPT 2"x2" SLIDE MAGAZINES

Sturdy plywood construction, covered with durable blue zero-tweed fabric and scotch-grain leatherette.

PC-6 Airequip Carrying Case for 5 Airequip Magazines and Changer, our No. 12-02, Blackhawk price at only.....\$5.98

PC-12 Airequip Carrying Case for 11 Airequip Magazines and Changer, our No. 12-03, Blackhawk price at only.....\$9.98

## ADMIRAL B-12 PHOTOGRAPHIC CASE

A well-made leatherette covered plywood case designed to hold 12 slide magazines of any type. This includes Airequip, Keystone, IMC, Yankee, etc. Has brass-plated hardware, plastic handle and rubber feet for protection. Finished in attractive two-tone gray.

Admiral B-12 Photographic Case, our No. 12-01, Blackhawk bargain price at only.....\$5.95



Blackhawk pays the postage on most items listed in this circular when remittance in full accompanies the order, but only when the shipment comes to a post office, not the U. S. Postal Service. Some items, such as projectors, screens, tape recorders, projector stands, etc. because of size or weight, or both, do not qualify for shipment by parcel post. On these, we do not pay the transportation charges. The item is delivered to you by express or freight collect. In all cases we have attempted to call to your attention these non-mailable items at the point where they are listed, but irrespective of this, we do not postpay or pay transportation charges on any single item too large or too heavy, when packed, to go by parcel post.

Customers ordering films for shipment to points in the State of Iowa must also add 2% for the State Sales Tax.

Blackhawk will gladly make shipments of merchandise on a C.O.D. basis to any point in the United States or to U. S. territories and possessions. However, on C.O.D. shipments, the purchaser pays all transportation charges, insurance and C.O.D. fees, and money order fees, in addition to the cost of the merchandise. Because of the weight involved, we will not forward projectors on a C.O.D. basis unless a deposit of \$25.00 is enclosed to guarantee transportation charges, and then only within the continental United States.

None of the motion picture prints offered herein, either new or used, may be used for television or theatrical purposes, as these rights are specifically reserved. All new 16mm. and 8mm. short subject prints (except our Laurel and Hardy comedies, *Hymnals* and *Songbooks of the Screen*) may be shipped by us to any destination in the world. Certain feature picture prints, both used and new, and certain soundtracks on which the rights are available, are restricted as to the territories in which they may be used.

Customers in Canada and Mexico should add 10% to the prices of all items which are normally postpaid in the United States for postpaid delivery to them. On non-postpaid items, Canadian and Mexican customers should inquire in advance as to transportation charges unless those charges may be collected on delivery. Remittance must be in U. S. funds. Minimum order is \$10.00.

On small orders that may be shipped by parcel post in a single package, customers in all foreign countries (as well as Canada and Mexico) may have postpaid delivery by adding 10% to the prices of the items making up the shipment, providing the items are within the size and weight limits for parcel post shipments to their country. Minimum order is \$10.00.

Customers in Continental United States (the 48 states and the District of Columbia) may now purchase anything listed by Blackhawk on convenient time payments. Furthermore, our convenient add-on payment service is available to those of you already having satisfactory time payment accounts in operation. This add-on service provides that any additional merchandise may be selected from our catalogs or bargain bulletins and added-on to that merchandise already being paid for on a time payment account—up to certain limits. A time payment charge of 10% is made over the cash price for these additional items. Monthly payments will graduate upward depending on the total amount outstanding on the time payment account after the addition of the add-on amount.

Below are the minimum down payments required based on the total amount of your purchase.

On orders totaling \$25.00 to \$50.00	\$ 5.00
On orders totaling \$50.01 to \$100.00	\$10.00
On orders totaling \$100.01 to \$150.00	\$15.00
On orders totaling \$150.01 to \$200.00	\$20.00
On orders totaling \$200.01 to \$250.00	\$25.00
On orders totaling \$250.01 to \$300.00	\$30.00
On orders totaling \$300.01 to \$350.00	\$35.00

The amount of your time payment charge and the amount of your monthly payment is determined by the unpaid balance remaining after we have deducted your down payment from the total of your purchase. Thus, the larger you can make your down payment, the lower will be your time payment charges and the smaller will be your monthly payments.

Time payment charges are based on the unpaid balance remaining after the deduction of your down payment from the total of your purchase. Here they are scheduled:

On unpaid balances	totaling	\$25.00	to	\$50.00	\$ 5.00
On unpaid balances	totaling	\$50.01	to	\$100.00	\$10.00
On unpaid balances	totaling	\$100.01	to	\$150.00	\$15.00
On unpaid balances	totaling	\$150.01	to	\$200.00	\$20.00
On unpaid balances	totaling	\$200.01	to	\$250.00	\$25.00
On unpaid balances	totaling	\$250.01	to	\$300.00	\$30.00
On unpaid balances	totaling	\$300.01	to	\$350.00	\$35.00

As is explained above, the size of your monthly payment is based upon the unpaid balance (including the time payment charge) remaining after deducting your payment from the total of your purchase. Here is the schedule:

On unpaid balances totaling	\$25.00	to \$50.00	\$ 5.00
On unpaid balances totaling	\$50.01	to \$100.00	\$10.00
On unpaid balances totaling	\$100.01	to \$150.00	\$15.00
On unpaid balances totaling	\$150.01	to \$200.00	\$20.00
On unpaid balances totaling	\$200.01	to \$250.00	\$25.00
On unpaid balances totaling	\$250.01	to \$300.00	\$30.00
On unpaid balances totaling	\$300.01	to \$350.00	\$35.00

We're always glad to add additional purchases to time payment accounts already outstanding. The additional time payment charge will be based on the amount added to the time payment contract. The charge itself will be determined from schedule 1 up above.

The amount payable monthly, when an add-on is made, will be based on the total amount still due including the unpaid balance of the original account plus the unpaid balance on the add-on. When these two are combined, the total will fall into one of the brackets indicated in C.

We've provided this information so that you will know exactly the amount you will owe. However, to help you further, we prepare a time payment schedule for you at the time we ship the merchandise. We show you the exact amount due and the dates on which the amount should be received here in Davenport. So—do not let the details bother you. We'll do the figuring.

## To Open a Monthly Payment Account

1235 W. Fifth St.  
DAVENPORT, IOWA

**SIGN THIS PART AND ANSWER ALL QUESTIONS**

Remember them without your written consent and will assume responsibility for any loss or damage to them. Should I fail to make any payment when due, you may repossess the goods at any time after such default or you may hold the undersigned jointly and severally for the full unpaid balance, which shall then become due and payable.

Blackhawk Films: I am enclosing \$\_\_\_\_\_ as a down payment on the Monthly Payment price of the goods listed above.



Thirty days after I receive the goods I will pay \$\_\_\_\_\_ to Blackhawk Films at its office in Davenport, Iowa, and a similar amount each thirty days thereafter until the total Monthly Payment price is paid. Until the goods are fully paid for, title and right to possession shall remain in you. I will not ask, remove, or

Your Signature ..... Signature of Wife .....  
 WRITE—do not print      WRITE—do not print

Street Address ..... Route ..... Box .....

Answer all questions below to establish credit—All information will be held confidential—Fill in completely to avoid delay!

**IF MARRIED. ALL ANSWERS MUST APPLY TO HUSBAND (except where otherwise provided)**

Your age? \_\_\_\_\_

Patent must  
(den for minor)

Are you married? \_\_\_\_\_

Number of  
dependents? \_\_\_\_\_

How long have  
you lived in  
your community? \_\_\_\_\_

Do you rent? ☐ How much is  
your rent or  
own home? \_\_\_\_\_

☐ mortgage payment? \_\_\_\_\_

What are you  
former  
present WEEKLY  
earnings? \$  
address

Employer's name ..... Employer's address .....  
 (Please give company name) .....  
 it with present employer ..... less than one year, how long with former employer? .....

Weekly	From	Wife's	Wife's
Average	what source?	Employer	Earnings
Other	Income		\$

your Bank ..... Address .....

Store ..... Complete Address..... Business .....

Store ..... Complete Address..... Business.....

Store ..... Complete Address ..... Business .....

FOR THOSE WHO ALREADY HAVE AN ACCOUNT WITH US

your catalog apply to this purchase.

Street Address or  
Route and Box No.

City ..... Zone If Any ..... State .....







**8mm. and 16mm.**  
50-ft., 8mm. color editions (when available), Castle's list price, \$3.95 each; Blackhawk's price, three for \$10.99, each \$1.99 each; Blackhawk's price, three for \$5.19, each \$1.79 each.

50-ft., 8mm. color editions (when available), Castle's list price, \$3.95 each; Blackhawk's price, three for \$10.99, each \$1.99 each; Blackhawk's price, three for \$5.19, each \$1.79 each.

150-ft., 8mm. color editions (when available), Castle's list price, \$11.49 each; Blackhawk's price, each \$8.98.

300-ft., 16mm. silent, black and white editions, Castle's list price, \$19.98 each; Blackhawk's price, each \$14.98.

300-ft., 16mm. sound, black and white editions, Castle's list price, \$22.95 each; Blackhawk's price, each \$17.95.

**CASTLE FILMS**

**WOODY WOODPECKER**

**CARTOONS**

Ace in the Hole

Barber of Seville

Bathing Buddies

Coo Coo Bird

Dizzy Acrobat

Fair Weather Fiends

The Gate Crasher (Color, too)

The Giant Killer

The Goofy Golfer

The Great Magician (Color, too)

Hollywood Matador

Hot Shot

Indian Whoopie (Color, too)

Invisible Woody

The Loan Stranger

Operation Sawdust (Color, too)

Puny Express

Reckless Driver

Redwood Sap

The Screwball

Sleep Happy (Color, too)

Smoked Hams

Solid Ivory

The Stagecoach Hoax (Color, too)

Termites From Mars (Color, too)

Well Oiled

What's Sweepin' (Color, too)

Wicky Wacky (Color, too)

Who's Cooking Who?

Woody Dines Out

Young and Handsome

**ABBOTT & COSTELLO**

Champs of the Chase

The Foreign Legion

Fun on the Run

Gobs in a Mess

High Flyers

Kitchen Mechanics

Knights of the Bath

Midget Car Maniacs

No Bulls, Please!

No Indians, Please!

Oysters and Muscles

Riot on Ice

Rocket and Roll

**W. C. FIELDS**

Circus Slicker

The Great Chase

Hurry, Hurry

**CHILDREN'S CLASSICS**

Ali Baba and the Forty Thieves

Arabian Nights

**THREE LITTLE BRUINS**

Three Little Bruins in a Canoe

Three Little Bruins in the Woods

Three Little Bruins Make Friends

Three Little Bruins Make Mischief

Three Little Bruins on a Spree

**SCIENCE-FICTION**

The Creature from the Lagoon

It Came From Outer Space

Termites From Mars (Woody Woodpecker) (Color, too)

**CIRCUS**

**EXTRAVAGANZAS**

Carnival at the Zoo

Circus at the Zoo

Fun at the Circus

Here Comes the Circus

**ANIMAL ADVENTURES**

Africa Untamed

The Big Cage

Caged Fury

Grocodile Thrills

Glyde Beatty's Animal Thrills

Flaming Jungle

Killer Gorilla

Lion-Tiger Fight

Perils of the Wild

Simba, Killer Lion

Wild-River Safari

BULK RATE  
U. S. POSTAGE  
**PAID**  
Davenport, Iowa  
Permit No. 344



This Bargain Bulletin No. 67, together with Nos. 65 and 66, represents most of our line of regularly available motion pictures and slides and photographic equipment and supplies. For ordering these items, this issue No. 67 may be considered to be in effect to July 24, 1958. However, for used 16mm. sound prints and other used films, and for close-out or limited availability equipment and supplies, we recommend that you do not use it for ordering after Monday, June 16, 1958, as issues Nos. 68 and 69 out by then and we need up-to-date, will be far more accurate sources for that class of material.

To: